

8 Community and stakeholder engagement

8.1 Introduction

This chapter provides an overview of the stakeholder and community consultation activities undertaken for the proposed Western Sydney Airport EIS and Airport Plan. This includes an outline of the objectives of community consultation and details of the activities undertaken during the three phases of engagement:

- Phase 1: the preparation of the draft EIS and draft Airport Plan, from September 2014 to October 2015;
- Phase 2: the public exhibition of the draft EIS and draft Airport Plan, from 19 October 2015 to 18 December 2015; and
- Phase 3: the finalisation of the EIS and preparation of the revised draft Airport Plan, from 19 December 2015 onwards, which will extend after after publication of the EIS.

These three phases include activities undertaken to raise awareness, provide information and answer questions community members may have regarding the EIS, Airport Plan and other aspects of the project. Activities were held at locations across Western Sydney and the Blue Mountains, and the project website also provided a comprehensive, clear and accessible source of information.

Community members were able to have their say and make submissions on the draft EIS and draft Airport Plan during the exhibition period (Phase 2). In total, 4,975 submissions were received from 3,973 unique submitters. For more information about the submissions and how they were addressed in the final EIS, see Volume 5 – the Submissions Report.

This chapter addresses the consultation and engagement requirements from the Australian Government Department of the Environment EIS guidelines (see Appendix C in Volume 4), and Schedule 4 of the EPBC Regulations 2000.

8.2 Approach and objectives for community consultation

8.2.1 Engagement objectives

The objectives of the communication and engagement activities are to:

- proactively and regularly engage with stakeholders to ensure they are appropriately consulted throughout the approval and development process;
- inform and advise the community, with a particular focus on the Western Sydney community, of the current activity and the next steps in the process;
- engage with the community to communicate the significant benefits of the proposed airport and address any points of concern;
- encourage participation in the conversation and submission of comments through community consultation opportunities; and
- provide accessible and reliable information about the project.

8.2.2 Communication and Engagement Strategy

An overarching *Communication and Engagement Strategy* was prepared to support the proposed airport, including the development of the EIS and communication with the community and stakeholders about the project's progress. The communication strategy identified three key target audiences for communication and engagement:

- the community in the direct environs of Badgerys Creek;
- stakeholders and significant others; and
- the broader Sydney community.

The communication strategy addresses the communication and engagement needs of each target audience, based on initial community research and stakeholder consultation conducted in September 2014. The research involved 11 focus groups and an online survey of 2,041 Sydney residents representative of age, gender and location. The key findings of the research indicated that:

- there was support for the idea of a Western Sydney Airport;
- there was limited awareness of the announcement of the proposed airport and associated infrastructure;
- there was a general acknowledgement that there are challenges that need to be addressed in developing the proposed airport; and
- there was considerable scepticism about this project proceeding.

In consideration of these findings and supported by the results of ongoing independent research, an engagement approach was developed for the EIS. This approach supports the overarching Strategy.

8.2.3 Engagement approach

The engagement approach for the preparation and exhibition of the draft EIS and draft Airport Plan was guided by the Core Values and Code of Ethics of the International Association for Public Participation (IAP2) and, given the Department of Infrastructure and Regional Development is a Commonwealth agency, the Australian Public Service Values and Code of Conduct. The following approach was taken for community and stakeholder engagement throughout the preparation of the EIS:

- identify all relevant stakeholders;
- develop a Stakeholder and Community Engagement Framework (Framework) including communication and engagement activities during the preparation of the draft EIS and the draft Airport Plan and throughout the public exhibition period;
- implement the Framework to reach identified communities and stakeholders; and
- evaluate engagement outcomes for use in ongoing consultation regarding the airport.

Figure 8–1 below provides a broad overview of the opportunities for engagement across each phase of the EIS and Airport Plan.

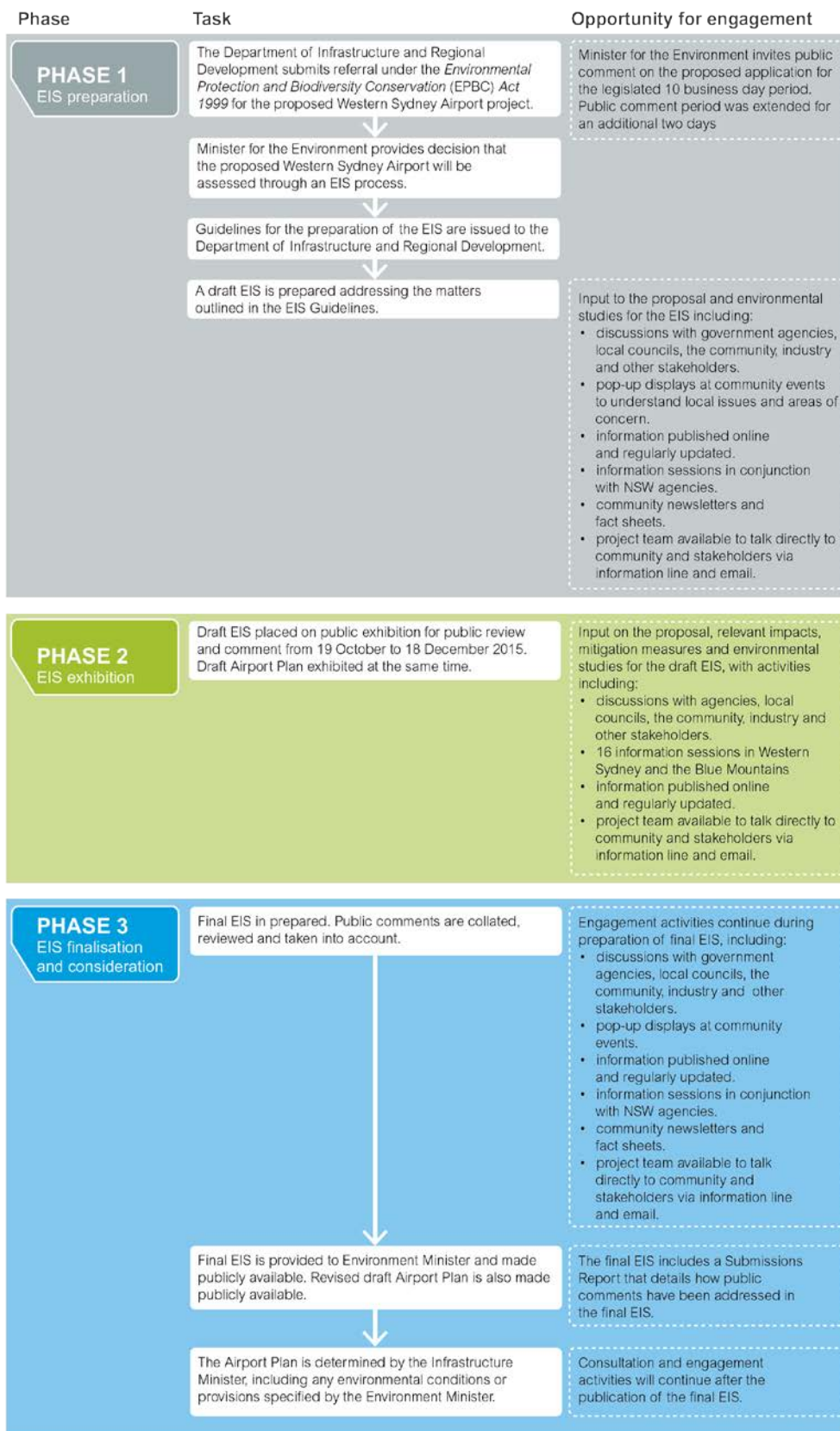


Figure 8–1 EIS and Airport Plan process and consultation flowchart

8.2.4 Stakeholder engagement

Engagement with key stakeholders has been a key component of communication and engagement activities and has been ongoing during all three phases. The engagement work undertaken ensures stakeholders are informed and are able to assist their broader communities in accessing information about the project. Table 8–1 below lists stakeholders engaged and the level of consultation which took place.

Table 8–1 Key stakeholder engagement undertaken during all three phases

Stakeholder group	Stakeholder	Level of consultation
Australian Government	Civil Aviation Safety Authority, including the Office of Airspace Regulation	<ul style="list-style-type: none">• One-on-one meetings and briefings• Letters• Organisational briefings• Telephone and email communication
	Australian Federal Police	
	Air Services Australia	
	Bureau of Meteorology	
	Department of Infrastructure & Regional Development	
	Department of the Environment and Energy	
	Department of Immigration and Border Protection	
	Department of Agriculture and Water Resources	
	Department of Defence	

Stakeholder group	Stakeholder	Level of consultation
NSW Government	Transport for NSW	• One-on-one meetings
	NSW Environment Protection Authority	• Telephone and email communication
	NSW Office of Environment & Heritage	• Letters
	NSW Department of Planning & Environment	• Briefings
	NSW Roads and Maritime Services	
	Sydney Water Corporation	
	NSW Office of Water	
	NSW Rural Fire Services	
	NSW Department of Primary Industries (Fisheries)	
	NSW Department of Trade & Investment	
	NSW Land and Housing Corporation – South Western Sydney, Nepean-Blue Mountains	
	NSW Community Services – Sport and Recreation	
	NSW Fire and Rescue	
	NSW Police	
	NSW Ambulance	
	NSW Health – Local Health Districts (South Western Sydney, Western Sydney, Nepean Blue Mountains)	
	NSW Catholic Schools Office	
	NSW Department of Education and Communities	
	NSW Department of Premier and Cabinet	
	Greater Sydney Commission	
	Western Sydney Parklands Trust	
Local government	Cumberland Council (formerly Auburn City Council, Holroyd City Council and part of Parramatta City Council)	• One-on-one meetings
	Bankstown City Council	• Telephone and email communication
	Blacktown City Council	• Letters
	Blue Mountains City Council	• Briefings
	Camden Council	
	Campbelltown City Council	
	Fairfield City Council	
	Hawkesbury City Council	
	Liverpool City Council	
	Parramatta City Council	
	Penrith City Council	
	The Hills Shire Council	
	Wollondilly Shire Council	

Stakeholder group	Stakeholder	Level of consultation
Other stakeholders	Australian Attractions	• One-on-one meetings
	Australian Tourism Export Council	• Telephone and email communication
	Bankstown Airport and Camden Airport	• Briefings
	Blue Mountains Accommodation and Tourism Association	
	Blue Mountains Chamber of Commerce	
	Blue Mountains Lithgow and Oberon Tourism	
	Board of Airline Representatives Australia	
	Bus and Coach Association NSW	
	Camden Chamber of Commerce & Industry	
	Campbelltown Chamber of Commerce	
	Committee for Sydney	
	Endeavour Energy	
	Fairfield Chamber of Commerce	
	Greater Blacktown Business Chamber	
	Infrastructure Partnerships Australia	
	Liverpool Chamber of Commerce	
	Macarthur Regional Organisation of Councils	
	NBNCo	
	NSW Business Chamber	
	NSW Land Council	
	Office of Penrith Lakes	
	Penrith Valley Chamber of Commerce	
	Property Council of Australia	
	SITA Australia	
	Southern Cross Airports Association	
	Sydney International Regatta Centre	
	TAFE NSW	
	TransGrid	
	Transport and Tourism Forum	
	University of NSW	
	University of Sydney	
	Urban Development Institute of Australia	
	Urban Taskforce	
	Western Sydney Airport Alliance	
	Western Sydney Business Chamber	
	Western Sydney Business Connection	
	Western Sydney Community Forum	
	Western Sydney Regional Organisation of Councils	
	Western Sydney University	

In addition to these stakeholders, the Department of Infrastructure and Regional Development has also consulted with other industry participants relevant to an airport development, including airlines, aviation industry groups, airport operators and financiers.

Aboriginal stakeholder consultation

As part of the Aboriginal heritage component of the draft EIS, Aboriginal stakeholder consultation was undertaken by Navin Officer Heritage Consultants with reference to the NSW Office for Environment and Heritage protocols. The four stages of consultation undertaken between February and August 2015 were:

- Stage 1 – Notification of the project proposal and identification and registration of stakeholders;
- Stage 2 – Presentation of information about the proposed project and the proposed assessment methodology;
- Stage 3 – Gathering information about cultural significance; and
- Stage 4 – Review of draft cultural heritage assessment report.

Overall there were 33 registered stakeholders for the field participation program. For further information, see Chapter 19 (Volume 2a) and Appendix L1 (Volume 4).

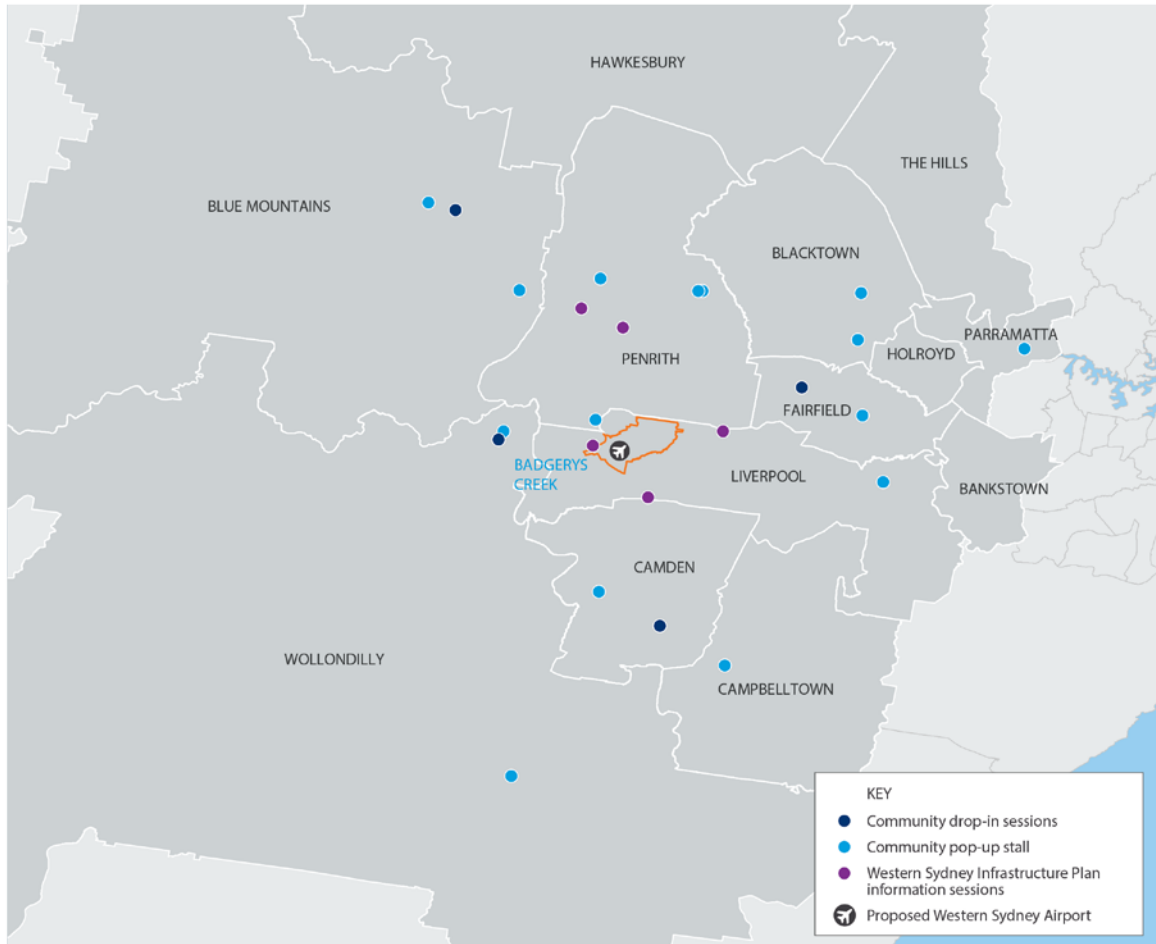
8.3 Phase 1 – preparation of the draft EIS and draft Airport Plan

The proposed airport represents one of the most significant infrastructure projects in Australia for decades. Ensuring the community is informed about the project and has access to the latest project information is a key component throughout all phases of its approval, development and implementation.

During Phase 1, the engagement programme focused on raising awareness, providing information and consulting with the community and key stakeholders. This consultation approach was designed to inform stakeholders about the proposed airport and encourage participation in a conversation, allowing the development of the proposal to benefit from stakeholder knowledge and understanding of specific needs. Table 8–2 below summarises the consultation with stakeholders and the community undertaken prior to the release of the draft EIS and draft Airport Plan for public exhibition.

A variety of activities to engage the community and stakeholders were undertaken during Phase 1, from September 2014 through to the beginning of the exhibition of the draft EIS and draft Airport Plan in October 2015. This included conducting focus groups, stakeholder meetings, community pop-up displays and information sessions, and the launch of a dedicated information line and email. A dialogue has been established with Federal and State Members of Parliament (MPs) and local councils representing the electorates surrounding the site, in consultation with relevant Ministers' offices. In addition, a range of materials were developed to inform community and stakeholders about the project, including a dedicated project website, fact sheets and regular newsletters. Figure 8–2 below lists all community pop-up displays and information sessions undertaken during Phase 1.

Section 8.3.4 provides a summary of issues raised by community members and stakeholders during Phase 1 of consultation, including how they were addressed in detail in the draft EIS.



Month	LGA	Event type	Location
FEBRUARY	Penrith/Liverpool	Community pop-up stall	Luddenham Show
MARCH	Blacktown	Community pop-up stall	Blacktown Show
APRIL	Blue Mountains	Community pop-up stall	Glenbrook Market
	Fairfield	Community pop-up stall	Fairfield City Markets
MAY	Blue Mountains	Community pop-up stall	Blue Gum Rotary Market
	Wollondilly	Community pop-up stall	Picton Markets
JUNE	Blacktown	Community pop-up stall	Blacktown Markets
	Blacktown	Community pop-up stall	St Marys and Mt Druitt Rotary Clubs Markets
	Liverpool	Community pop-up stall	Liverpool Night Markets
JULY	Liverpool	WSIP and airport information sessions	Bringelly
	Liverpool	WSIP and airport information sessions	Luddenham
	Penrith	WSIP and airport information sessions	South Penrith
AUGUST	Camden	Community pop-up stall	Cobbitty Markets
	Liverpool	WSIP and airport information sessions	Luddenham
	Penrith	WSIP and airport information sessions	Glenmore Park
	Penrith	WSIP and airport information sessions	Kemps Creek
	Penrith	Community pop-up stall	Penrith Show
SEPTEMBER	Blue Mountains	Community drop-in sessions	Blue Mountains Theatre & Community Hub
	Fairfield	Community drop-in sessions	Horsley Park Hall
	Wollondilly	Community drop-in sessions	Warragamba Town Hall
	Camden	Community drop-in sessions	Narellan Child, Family & Community Centre
	Penrith	Community pop-up stall	St Marys Spring Festival
	Fairfield	Community pop-up stall	Fairfield City Markets
	Campbelltown	Community pop-up stall	Macarthur Square Shopping Centre
	Parramatta	Community pop-up stall	Western Sydney University Parramatta Campus
	Wollondilly	Community pop-up stall	Warragamba DamFest

Figure 8–2 Summary of community pop-up displays and information sessions between February and October 2015

Table 8–2 Summary of stakeholder engagement and community consultation activities during Phase 1

Activity	Description
Briefings and meetings	<p>Discussions were held with a variety of stakeholders including government agencies, businesses, local councils, industry peak bodies, and tourism and community groups as well as elected officials. This work was part of the whole-of-government approach, ensuring community members received consistent information from different sources.</p> <p>Over 70 meetings were held with individuals or groups.</p>
Community events	<p>A total of 16 community pop-up displays at local events were held between February and October 2015. 4,153 community members approached the stalls for information.</p>
Information sessions	<p>A total of 10 information sessions were held between July and September 2015, before the exhibition of the draft EIS and the draft Airport Plan, to provide information on the proposed airport. These included 4 information sessions held by the project team for the proposed airport and attendance at a further 6 information sessions hosted by other government agencies on associated projects. 1,281 community members attended the information sessions.</p>
Focus groups	<p>Members of the Western Sydney community participated in 11 focus groups in September 2014 and a stakeholder focus group in June 2015. The focus groups were to understand and explore the existing attitudes and perceptions towards a Western Sydney Airport, including information needs and requirements.</p> <p>97 Western Sydney community members participated in the focus groups in September 2014. Representatives of nine stakeholder groups participated in the June 2015 stakeholder workshop.</p>
Surveys	<p>Online surveying was used to gauge interest and existing understanding of the proposed Western Sydney Airport. Online surveys were completed in September 2014, November 2014 and June 2015.</p> <p>A total of 3,041 community members from Western Sydney and greater Sydney have completed online surveys.</p>
Community newsletters	<p>Three community newsletters were released during Phase 1, including summer 2014 released in November 2014; autumn 2015 released in May 2015; and winter 2015 released in July 2015. Each edition of the newsletter was distributed to around 7,500 households near the airport site, made available on the project website, distributed to local councils and emailed to subscribers.</p>
Fact sheets	<p>A number of fact sheets were available at all community events as well as online. Fact sheets available during Phase 1 were:</p> <ul style="list-style-type: none">• An airport for Western Sydney;• Western Sydney Infrastructure Plan;• Environmental assessment for Western Sydney Airport; and• The right of first refusal.
Website content and updates (www.westernsydneyairport.gov.au)	<p>An online presence was launched in order to provide a comprehensive and authoritative source of information for the community and stakeholders. In the early stages of the project, a dedicated page was available via the Department of Infrastructure and Regional Development website. A dedicated website was subsequently launched in April 2015. The website is updated regularly with the latest project information.</p> <p>There were over 23,700 visits to the website between April and September 2015, including over 66,700 page views.</p>
Information line and email to project team	<p>A project specific free-call phone number and email were setup during Phase 1 for individuals wishing to speak to the project team. Approximately 225 phone calls and over 200 emails were received.</p>
Media releases	<p>Media releases were issued throughout Phase 1 in order to provide updates on project progress. 12 media releases about the project were issued, in addition to 10 media releases about the Western Sydney Infrastructure Plan.</p>

8.3.1 Stakeholder engagement during Phase 1

Stakeholders representing government agencies, local councils, industry and community groups were consulted throughout Phase 1. This included an ongoing schedule of meetings and briefings, letters, and phone and email communication. Table 8–2 provides a full list of the stakeholders engaged during all three phases and the level of communication that has occurred.

8.3.2 Community consultation during Phase 1

Community consultation for the proposed airport began in 2014 and has been an ongoing focus of the project. The key community consultation activities undertaken before the release of the draft EIS and draft Airport Plan for public exhibition are described below and are summarised in Figure 8–2 above and described in detail below.

Community pop-up stalls

A total of 16 community pop-up stalls at local events were carried out between February and October 2015. The stalls provided information about the project to the Western Sydney community and an opportunity to engage with the project team. Resources available at these stalls included newsletters, fact sheets and maps.

The stalls were held at locations throughout Western Sydney, including nine local government areas. Approximately 4,153 community members approached the stalls for information. Table 8–3 below provides details of the number of community members who approached the stalls and discussed the project with the team. Information on issues raised by community members is detailed in Table 8–6.

Table 8–3 Summary of visits to community pop-up stalls

Location	Local government area	Date	Attendees (approximate)
Luddenham Show, Luddenham	Liverpool/Penrith	21-22 February 2015	225
Blacktown Show, Blacktown	Blacktown	7-8 March 2015	158
Fairfield City Markets, Prairiewood	Fairfield	11 April 2015	180
Glenbrook Markets, Glenbrook	Blue Mountains	18 April 2015	230
Picton Markets, Picton	Wollondilly	3 May 2015	90
Blue Gum Rotary Markets, Faulconbridge	Blue Mountains	23 May 2015	120
Liverpool Night Markets, Liverpool	Liverpool	6 June 2015	113
Blacktown Markets, Blacktown	Blacktown	14 June 2015	407
St Marys and Mt Druitt Rotary Club Market, St Marys	Blacktown	28 June 2015	72
Cobbitty Village Markets, Cobbitty	Camden	1 August 2015	430
Penrith Show, Penrith	Penrith	29 August 2015	382
St Marys Spring Festival, St Marys	Penrith	5 September 2015	670
Fairfield City Markets, Prairiewood	Fairfield	12 September 2015	174

Location	Local government area	Date	Attendees (approximate)
Macarthur Square Shopping Centre, Campbelltown	Campbelltown	26 September 2015	320
Western Sydney University Parramatta Campus, Parramatta	Parramatta	30 September 2015	170
Warragamba DamFest, Warragamba	Wollondilly	18 October 2015	412

Western Sydney Infrastructure Plan information sessions, July-August 2015

In July and August 2015, NSW Roads and Maritime Services held 6 information sessions on the Western Sydney Infrastructure Plan (WSIP). As the WSIP comprises a number of projects around the airport site, representatives from the project team attended the sessions in order to provide information and answer any questions about the Western Sydney Airport project. This contributed to the whole-of-government approach used for community consultation, ensuring community members had access to consistent and clear information.

Projects funded under the WSIP include:

- upgrade of The Northern Road between Narellan and Jamison Road at South Penrith;
- a new M12 Motorway to the Western Sydney airport site between the M7 Motorway at Cecil Hills and The Northern Road at Luddenham;
- upgrade of Bringelly Road between The Northern Road and Camden Valley Way;
- building the Werrington Arterial Road;
- upgrade of the intersection of Ross Street and the Great Western Highway at Glenbrook; and
- a local road upgrade package.

In total, approximately 925 community members made enquiries about the Western Sydney Airport project at these information sessions. Table 8–4 below summarises the WSIP information sessions.

Table 8–4 Summary of WSIP information sessions

Location	Local government area	Date	Attendees (approximate)
Penrith Anglican College, Orchard Hills	Penrith	22 July 2015	200
Bringelly Community Centre, Bringelly	Liverpool	25 July 2015	200
Holy Family Primary School, Luddenham	Liverpool/Penrith	29 July 2015	200
Glenmore Park Youth & Community Centre, Glenmore Park	Penrith	1 August 2015	60
Kemps Creek Public School, Kemps Creek	Liverpool/Penrith	6 August 2015	150
Holy Family Primary School, Luddenham	Liverpool/Penrith	8 August 2015	115

Survey results at WSIP information sessions

Attendees at the WSIP information sessions had the opportunity to fill out a survey about their attitude toward the proposed airport and aspects of the project of interest to them. A total of 78 responses to the survey were obtained during the six information sessions. The majority of respondents (49 per cent) were from the Penrith LGA, with 29 per cent from the Wollondilly LGA, six per cent from Liverpool and 16 per cent from other LGAs.

Attitudes to the proposed airport were positive overall, with 46 per cent of respondents definitely supportive and a further 15 per cent conditionally supportive. Twenty per cent of respondents had concerns while 11 per cent were definitely opposed to the proposed airport. Impacts from noise, local transport connections and local benefits were areas of interest to respondents.

The survey results are summarised in Figure 8–3 below.

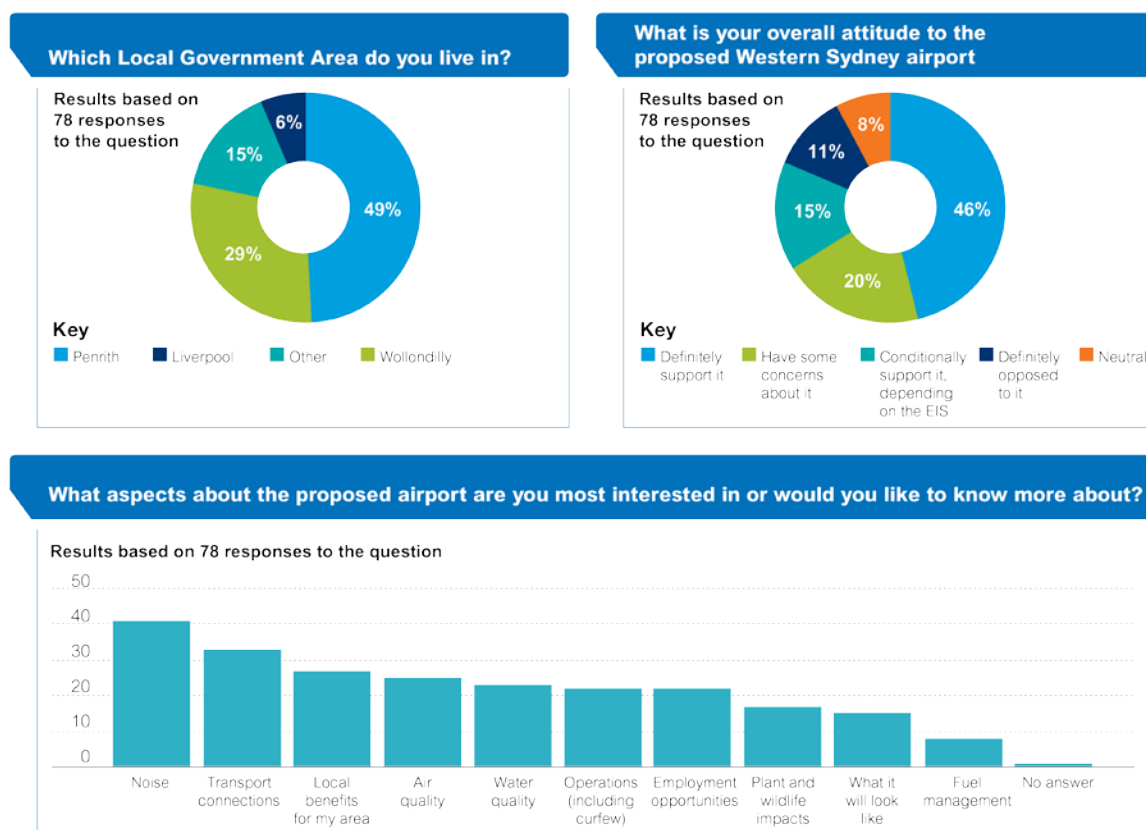


Figure 8–3 Summary of results from the WSIP information session questionnaire

Additional information sessions during Phase 1

Additional information sessions relating only to the proposed airport were also held during Phase 1. The purpose of these sessions was to make project information more accessible in advance of the release of the draft EIS and draft Airport Plan, in addition to reaching a broader audience than those who attended the WSIP sessions.

These additional information sessions provided the same information as the WSIP information sessions; however, for greater geographic coverage of Western Sydney, they also included areas further away from the airport site, including the Blue Mountains, Wollondilly, Camden and Fairfield local government areas. 211 community members attended the additional information sessions, details are provided in Table 8–5 below.

Table 8–5 Summary of Phase 1 information sessions

Location	Local government area	Date	Attendees (approximate)
Blue Mountains Theatre and Community Hub, Springwood	Blue Mountains	10 September 2015	74
Narellan Child, Family & Community Centre, Narellan	Camden	12 September 2015	36
Warragamba Town Hall, Warragamba	Wollondilly	17 September 2015	69
Horsley Park Hall, Horsley Park	Fairfield	19 September 2015	32

Survey results at the additional information sessions

A total of 127 responses were received with the largest number from residents of the Blue Mountains (42 per cent) and Wollondilly (23 per cent). Attitudes were negative overall, with 41 per cent opposed to the project and 25 per cent having some concerns.

Aircraft noise, air quality and water quality were among the aspects of the project that community members expressed interest in. The survey results are summarised in Figure 8–4 below.

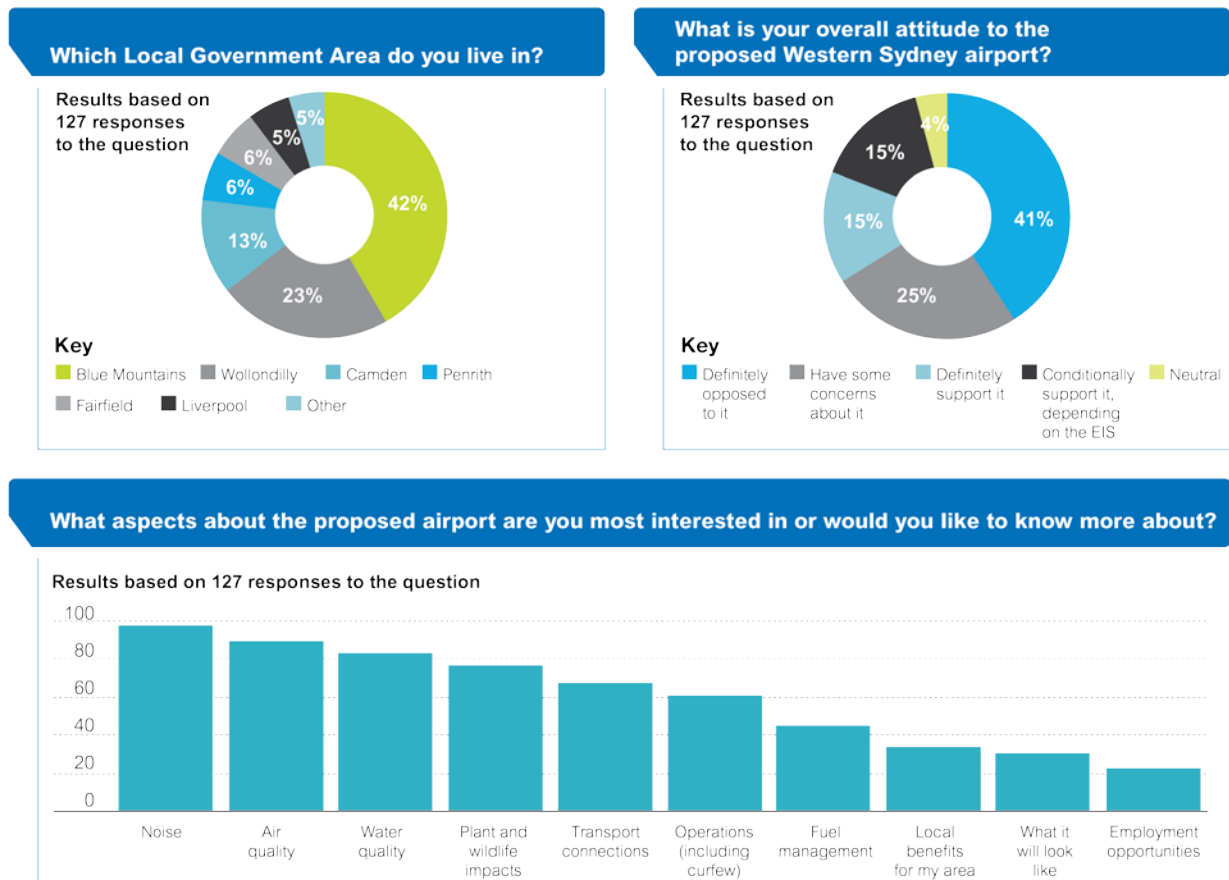


Figure 8-4 Summary of results from the additional information session questionnaire

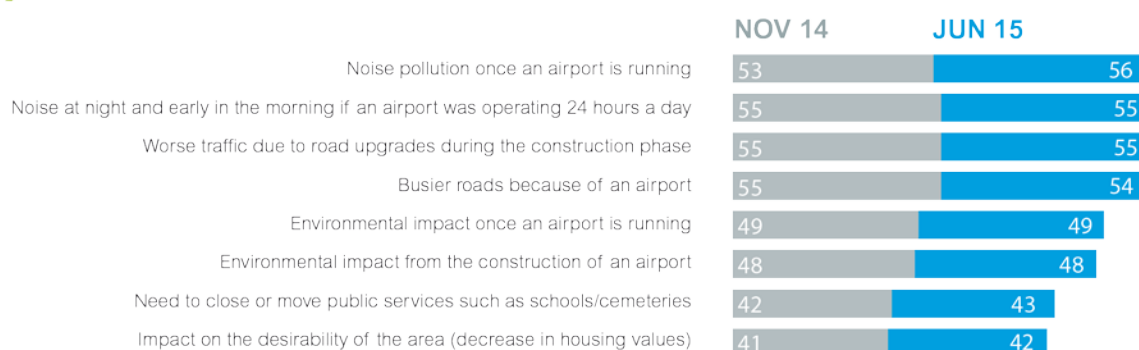
8.3.3 Community attitudes research during Phase 1

Research has been conducted at intervals to understand attitudes towards the proposed Western Sydney Airport and to ensure communication activities were tailored to meet the needs of the community and stakeholders.

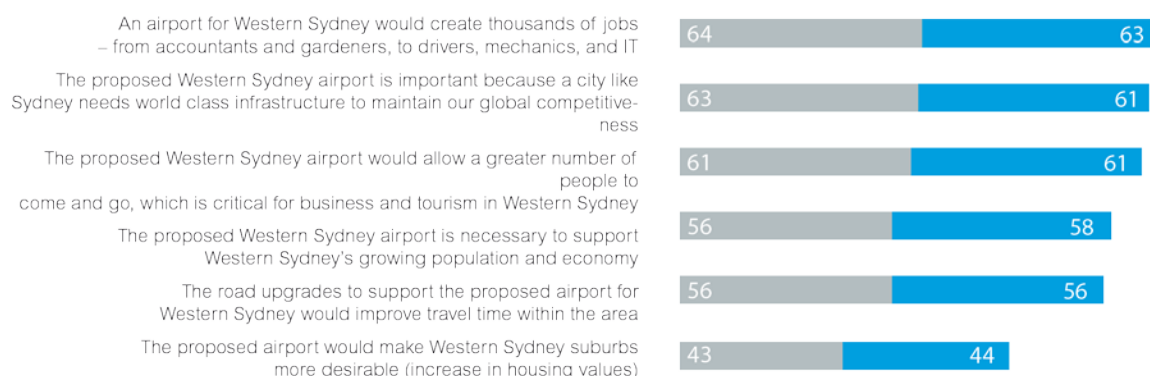
Initial online surveys of 2,041 randomly selected and representative participants and 11 focus groups were undertaken in September 2014. Outcomes of the surveys and focus groups were used by the EIS project team to better understand the communication needs of the community and inform the engagement strategies going forward.

A benchmark survey was undertaken in November 2014, with a subsequent survey undertaken in June 2015. These rounds of online surveys were completed by 501 randomly selected Western Sydney residents representative of age, gender and location. The findings on attitudes, concerns and demand for information are summarised below in Figure 8-5.

✈️ Concerns (% of respondents that strongly agree with the following issues)



✈️ Attitudes towards the proposed airport (% of respondents that strongly agree with the following statements)



✈️ Demand for information (% of total respondents)

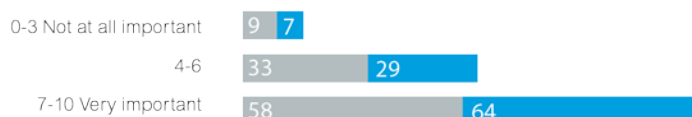


Figure 8–5 Summary of key community research results from November 2014 and June 2015

8.3.4 Summary of engagement, issues and responses during Phase 1

Community and stakeholder consultation during Phase 1 identified a broad range of issues which were taken into account in the draft EIS. The issues raised by government agencies, stakeholders and community members are listed in Table 8–6, along with a cross-reference to where they were addressed in the draft EIS. These issues are listed in order of most enquiries to the fewest.

Table 8–6 Summary of issues raised and where addressed in the draft EIS

Category	Issue raised during consultation before the release of the draft EIS (Phase 1)	Response provided in the draft EIS and where addressed in detail in the draft EIS
Noise	Impacts of 24 hour operation	<ul style="list-style-type: none"> An airport at Western Sydney has always been planned to operate on a curfew free basis. Planning restrictions have been in place for over 30 years to restrict incompatible development and allow flights to occur with minimal impact on the community. Aircraft today are about 75 per cent quieter than they were 40 years ago, with the industry continually reducing aircraft noise in line with technology and equipment improvements. Noise impacts due to airport ground-based operational noise would occur during the daytime and night time and affect dwellings and community infrastructure, particularly in Luddenham, Badgerys Creek, Bringelly, Greendale and Wallacia. Depending on the operating strategy adopted for WSA, communities that may experience overflight noise at varying levels during the daytime and night time include areas of St Marys and Erskine Park, Greendale, Silverdale, Horsley Park and parts of Blacktown. <p>More detail of indicative noise modelling and impacts were explained in Chapters 10 and 11 (Volume 2 of the draft EIS).</p>
Need for the proposed airport	Comparison with Sydney (Kingsford Smith) Airport operations	<ul style="list-style-type: none"> The size of the Sydney (Kingsford Smith) Airport site means the airport cannot grow sufficiently to support Sydney's long-term aviation needs. It is expected that the number of people flying into the Sydney region will be approximately 87 million by 2035, and double again by 2060. The proposed Western Sydney airport will meet the growing demand for air services and provide Sydney's growing West with its own airport. <p>Further detail was provided in Chapter 2 (Volume 1 of the draft EIS).</p>
Flight paths	Location and height of flight paths over Western Sydney	<ul style="list-style-type: none"> Indicative flight paths have been developed in consultation with Air Services Australia. Final flight paths will be prepared closer to the commencement of airport operations. <p>Further detail on the indicative flight paths was provided in Chapter 7 (Volume 1 of the draft EIS).</p>
Employment opportunities from the proposed airport	Positive economic impact of the proposed airport on Western Sydney	<ul style="list-style-type: none"> It is expected that the construction and operation of the proposed airport would result in significant economic and employment opportunities for the Western Sydney region. Benefits would be accrued beyond the aviation industry, and extend to businesses and employees in industries such as construction, utilities, trade, transport, accommodation, retail, professional services and administration. During peak construction, it is estimated that the benefits will include approximately 700-800 additional jobs. By the early 2030s, Western Sydney Airport is expected to provide nearly 9,000 direct jobs and over 4,000 in on-site business parks. This is projected to grow as the proposed airport grows. <p>Further detail was provided in Chapters 23 and 24 (Volume 2 of the draft EIS) and Appendix P1 (Volume 4 of the draft EIS).</p>

Category	Issue raised during consultation before the release of the draft EIS (Phase 1)	Response provided in the draft EIS and where addressed in detail in the draft EIS
Western Sydney Infrastructure Plan	Impacts on The Northern Road from the Western Sydney Infrastructure Plan	<ul style="list-style-type: none"> The Northern Road will be relocated concurrently with site preparation activities. The relocation is subject to detailed planning by Roads and Maritime Services. <p>Further detail was provided in Chapter 15 (Volume 2 of the draft EIS).</p>
Traffic and transport	What is the investment in the region for upgrading the roads?	<ul style="list-style-type: none"> The Australian and NSW governments are investing more than \$3.6 billion in a 10 year road investment plan for Western Sydney <p>Further detail was provided in Chapters 15 and 21 (Volume 2 of the draft EIS).</p>
	Connectivity with public transport and the CBD	<ul style="list-style-type: none"> In the short term it is expected that private transport will be the dominant mode of travel to and from the proposed Western Sydney airport. Initial rail services are expected to be provided to the Airport through the extension of the existing Sydney metropolitan rail network. A final alignment will be determined in consultation with the New South Wales Government. <p>Further detail was provided in Chapter 15 (Volume 2 of the draft EIS).</p>
Transport	Local connections maintained with the closure of Badgerys Creek Road.	<ul style="list-style-type: none"> Sections of Badgerys Creek road located within the airport site but outside the construction impact zone for the Stage 1 development is expect to remain in place to maintain access to the airport site and surrounding areas Roads located within the construction impact zone would be closed and pavement materials removed. Any road closures would be managed in consultation with NSW Roads and Maritime Services and Liverpool City Council. <p>Further detail was provided in Chapter 6 (Volume 1 of the draft EIS).</p>
	Impacts of additional traffic in the local area during construction	<ul style="list-style-type: none"> During construction it is expected that the distribution and volume of construction traffic would be approximately 160 additional vehicle movements (to and from the airport site) on Elizabeth Drive during the AM peak and 150 additional vehicle movements (to and from the airport site) on Elizabeth Drive during the PM peak. The types of vehicle movements associated with the construction of the proposed airport would not significantly impact on the surrounding transport system, with the exception of potential oversized vehicle movements required for the delivery of equipment during earthworks. These movements may require temporary road closures or suitable escorts. <p>Further detail was provided in Chapter 15 (Volume 2 of the draft EIS).</p>
Changing face of Western Sydney	Impact on property prices – positive or negative	<ul style="list-style-type: none"> Overall no discernible effect on property values as a result of other positive factors which offset the adverse impacts of noise. <p>Further detail was provided in Chapter 23 (Volume 2 of the draft EIS) and Appendix P2 (Volume 4 of the draft EIS).</p>

Category	Issue raised during consultation before the release of the draft EIS (Phase 1)	Response provided in the draft EIS and where addressed in detail in the draft EIS
	Assessment of loss in visual amenity in the area	<ul style="list-style-type: none"> It is anticipated that there will be a minor reduction in visual amenity and enjoyment of recreational areas located in Western Sydney e.g. Bents Basin Conservation Area, Burragorang State Conservation Area as well as the Blue Mountains. <p>Further detail was provided in Chapter 23 (Volume 2 of the draft EIS) and Appendix P1 (Volume 4 of the draft EIS).</p>
	Impacts on the current rural lifestyle	<ul style="list-style-type: none"> Semi-rural areas of Greendale, Silverdale and Horsley Park will have some impact due to overflight noise at varying levels during the daytime and night time. <p>Further detail was provided in Chapter 23 (Volume 2 of the draft EIS) and Appendix P1 (Volume 4 of the draft EIS).</p>
Operational issues	Location of fuel pipe and storage	<ul style="list-style-type: none"> The fuel farm for Stage 1 is expected to be located near the northern boundary of the proposed airport. An underground fuel piping system will connect it to a network of hydrants to be located at aircraft stands and designated hydrants to refuel ground based trucks. Investigations of a corridor for a future fuel pipeline will be undertaken in conjunction with the NSW Government. <p>Further detail was provided in Chapter 5 (Volume 1 of the draft EIS).</p>
	Will the proposed airport accommodate both domestic and international flights?	<ul style="list-style-type: none"> In 2031 there is expected to be a total of 170 passenger flights per day, of which 149 flights are assumed to be domestic and 21 are assumed to be international.
	Freight transport to and from the proposed Airport	<ul style="list-style-type: none"> It is anticipated that freight transport to and from the proposed airport will be approximately seven heavy movements per hour for Stage 1 operations. <p>Further detail was provided in Chapter 15 (Volume 2 of the draft EIS).</p>
	Freight aircraft traffic and potential for noise impacts	<ul style="list-style-type: none"> Freight noise is assessed with passenger noise. It is anticipated that in 2030 there will be approximately 28 freight movements per day and 104 in the longer term (2063). <p>Further detail was provided in Chapter 7 and Chapters 10 and 11 (Volume 2 of the draft EIS).</p>
Pollution levels in Western Sydney	Potential for impact on water quality in Warragamba Dam	<ul style="list-style-type: none"> Warragamba Dam is located approximately eleven kilometres west of the site. Construction of the proposed airport is not located within the catchment area for Warragamba Dam or Prospect Reservoir. There is potential however that airborne particles from the airport construction may be deposited within these two waterbodies through dispersion of airborne dust. This is unlikely to represent a significant risk to water quality. It is considered a low risk for potential aircraft emissions to impact the quality of surface water due to the proposed airport. <p>Further detail was provided in Chapter 13 (Volume 2 of the draft EIS).</p>

Category	Issue raised during consultation before the release of the draft EIS (Phase 1)	Response provided in the draft EIS and where addressed in detail in the draft EIS
	Assessment of the cumulative impacts of the proposed airport and surrounding projects	<ul style="list-style-type: none"> The cumulative impacts of noise, air quality, traffic and transport, biodiversity, water resources, Aboriginal and European heritage, planning and land use, landscape and visual amenity, social, economic, resources and waste and the Greater Blue Mountains World Heritage Area are assessed in the draft EIS. The assessment considers the potential cumulative impacts that may arise as a result of the construction and operation of the Western Sydney Airport and other major projects that are scheduled to coincide in the vicinity of the proposed airport site. The chapter identifies key major projects to consider in project planning and key cumulative risks. The highest risk for cumulative impact is the concurrent upgrade of The Northern Road and Elizabeth Drive which could contribute to construction fatigue for surrounding communities. To manage this risk a high level of coordination would be required between the ALC, the Department of Infrastructure and Regional Development, NSW Roads and Maritime Services and relevant construction contractors. During operations the ALC and the Department of Infrastructure and Regional Development, will liaise with Airservices Australia, CASA, other nearby airport operators, NSW Government agencies and other key stakeholders to identify measures to reduce operational cumulative impacts. <p>Further detail was provided in Chapter 27 (Volume 2 of the draft EIS).</p>
	Impact of fuel dumping on the local area, including on human health and water quality	<ul style="list-style-type: none"> Fuel jettisoning instances for commercial aircraft occurs in rare emergency conditions where an unscheduled landing is required. Where fuel dumping is considered necessary, the pilot is required take all reasonable precautions to ensure the safety of people, property, on the groundwater and the air. It is considered unlikely that fuel dumping will result in impacts to surface water bodies surrounding the proposed airport site including Warragamba Dam, Prospect Reservoir and private water storages. <p>Further detail was provided in Chapter 13 (Volume 2 of the draft EIS).</p>
Airport process and timing	Timing of the construction and operation of the proposed airport	<ul style="list-style-type: none"> It is expected that work on site will commence in 2016. Operations are expected to commence mid-2020s. <p>Further detail was provided in Chapter 13 (Volume 2 of the draft EIS).</p>

8.4 Phase 2 – public exhibition of the draft EIS and draft Airport Plan

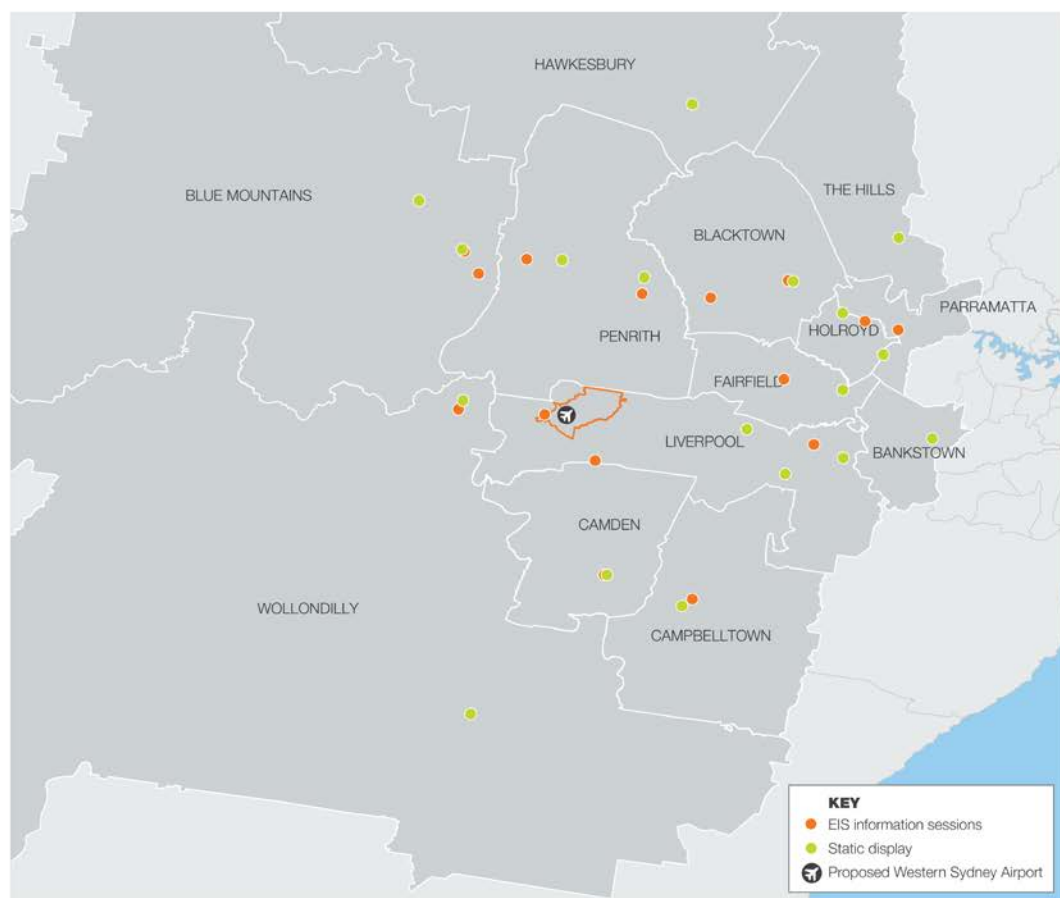
A programme of community and stakeholder consultation activities took place throughout the public exhibition of the draft EIS and draft Airport Plan from 19 October to 18 December 2015. The programme of activities was designed to raise awareness, provide consistent and accurate information, and answer questions raised by community members, who were invited to have their say and make submissions on the draft EIS and draft Airport Plan.

Activities were held across Western Sydney and the Blue Mountains throughout the exhibition period, and the project website also provided community members with access to information, resources and updates. All activities undertaken are listed in Table 8–7 below, and a map showing locations of activities is at Figure 8–6 below.

Table 8–7 Summary of stakeholder engagement and community consultation activities during Phase 2

Activity	Description
Community information sessions	The project team set up and staffed community information sessions at 16 locations in Western Sydney and the Blue Mountains. Each session provided local community members with the opportunity to review the draft EIS and draft Airport Plan, look at detailed maps, use the noise modelling tool, and speak to a member of the project team. Other government agencies also attended sessions in locations where local projects were occurring.
Static displays at local libraries	The draft EIS and draft Airport Plan, as well as summary information and other resources, were displayed at 19 local libraries across Western Sydney and the Blue Mountains, as well as 3 in the Sydney CBD and Canberra.
Website content and updates (www.westernsydneyairport.gov.au)	The westernsydneyairport.gov.au site was updated regularly throughout the exhibition period. Throughout the exhibition period accessible copies of the draft EIS, draft Airport Plan, noise modelling tool, summary document, fact sheets, community newsletter and responses to frequently asked questions were available online. Visits to the website during the exhibition period included over 36,000 individual user sessions comprised of almost 83,000 page views. Information about community information sessions and static displays was also available on the website.
Noise modelling tool	An online interactive mapping tool was launched during the exhibition period. It provided community members and stakeholders the opportunity to look up a specific address and provided a visual representation of the noise mapping information in the draft EIS and draft Airport Plan.
Project summary document	A plain English summary of the draft EIS and draft Airport Plan was developed for stakeholders and the community. It was available at all community information sessions, online and at static display locations.
Fact sheets	12 fact sheets were developed for a number of key topics to assist in the explanation of the outcomes of the draft EIS and the draft Airport Plan.
Community newsletter	The Spring 2015 community newsletter was released to coincide with the exhibition of the draft EIS and draft Airport Plan. The newsletter was sent to 7,500 local residential properties, provided to community members at community information sessions and static display locations, emailed to website subscribers, distributed to councils and made available on the project website.
Stakeholder briefings and meetings	Over 100 stakeholder briefings and meetings were held with government agencies, local councils, representatives from industry and the community, Federal and State MPs and Senators, and other stakeholders. These briefings provided information on aspects of the draft EIS and draft Airport Plan and were part of the whole-of-government approach, ensuring community members received consistent information from different sources.
Doorknocking	On Tuesday 20 October 2015, 75 properties that shared a boundary with the airport site or were in close proximity were doorknocked by the project team to provide project information and invite residents to the local community information session in Luddenham.
Letters	Letters were sent out to 75 residences near the airport site, 70 local organisations and 79 political representatives at the beginning of the exhibition period, providing information on the draft EIS and draft Airport Plan and engagement opportunities.
Postcard	A postcard was distributed to over 430,000 residential properties and was available at static displays and from local councils. It was used to inform the community of the exhibition of the draft EIS and draft Airport Plan and the opportunities to engage with the project.

Activity	Description
Newspaper notifications	Consistent with publication requirements of the EPBC Act and Regulations, 59 notifications were placed in 14 national, Sydney metropolitan and local newspapers and 10 foreign language newspapers. Each notification provided details of the draft EIS and draft Airport Plan exhibition activities.
Emails	Throughout the exhibition period, six informative emails were sent to over 600 individuals who provided an email address to be kept informed of the project.
USB copies of the EIS	The draft EIS and draft Airport Plan were available on USB drives. Any community member who requested a copy of the draft documents was provided a USB.
Translation services	Translation services were available throughout the exhibition period in languages spoken in Western Sydney. A language translation symbol was available on project documents and the project website offered translation assistance. Ten languages were selected according to analysis of linguistic diversity in Western Sydney, including: Arabic; Assyrian/Aramaic; Dari; Greek; Hindi; Italian; Serbian; Simplified Chinese; Spanish; and Vietnamese.
Information line and email to project team	The project team continually monitored calls and emails during the exhibition period. A total of 162 calls and 64 emails were received.
Surveys	A further round of research was conducted in December 2015, two weeks before the end of the exhibition period. The research was used to gauge community attitudes towards the project since the previous round of research in June 2015. 502 participants representative of age, gender and location in Western Sydney were surveyed, with results indicating greater awareness and an increase in positive sentiment towards the airport.



OCTOBER	LGA	Event type	Location
	Liverpool	EIS information session	Holy Family Primary School
	Blue Mountains	EIS information session	Blaxland Community Hall
	Penrith	EIS information session	St Mary's Memorial Hall
NOVEMBER			
	Liverpool	EIS information session	Bringelly Community Centre
	Liverpool	EIS information session	Hilda M. Davis Senior Citizens Centre
	Campbelltown	EIS information session	Campbelltown Civic Hall
	Holroyd	EIS information session	Wentworthville Community Centre
	Camden	EIS information session	Narellan Child Family Community Centre
	Penrith	EIS information session	Melrose Hall
	Penrith	EIS information session	St Marys Memorial Hall
	Parramatta	EIS information session	Parramatta Town Hall
	Blacktown	EIS information session	Minchinbury Neighbourhood Centre
	Wollondilly	EIS information session	Warragamba Town Hall
	Fairfield	EIS information session	Prairiewood Community Centre
DECEMBER			
	Blacktown	EIS information session	Alpha Park Hall
	Blue Mountains	EIS information session	Glenbrook School of Arts Hall
OCTOBER - DECEMBER			
	Bankstown	Static display	Bankstown City Library
	Blacktown	Static display	Max Webber Library
	Blue Mountains	Static display	Katoomba Library
	Blue Mountains	Static display	Springwood Library
	Blue Mountains	Static display	Blaxland Library
	Camden	Static display	Narellan Library
	Campbelltown	Static display	HJ Daley Library
	Fairfield	Static display	Fairfield Library
	Hawkesbury	Static display	Hawkesbury Library Service, Deerubbin Centre
	The Hills	Static display	Castle Hill Library
	Holroyd	Static display	Merrylands Central Library
	Liverpool	Static display	Liverpool City Library
	Liverpool	Static display	Green Valley Library
	Liverpool	Static display	Moorebank Library
	Parramatta	Static display	Parramatta City Library
	Penrith	Static display	Penrith City Library
	Penrith	Static display	St Marys Library
	Wollondilly	Static display	Wollondilly Library
	Wollondilly	Static display	Warragamba Silverdale Neighbourhood Centre
	Sydney	Static display	City of Sydney Library

Figure 8–6 Summary of community consultation activities between October and December 2015

8.4.1 Community information sessions

During the exhibition period, 16 community information sessions were held across Western Sydney and the Blue Mountains. In addition to staff from the draft EIS and draft Airport Plan project team, representatives from New South Wales government agencies with local projects were invited to the sessions, providing community members with access to accurate information across a range of local matters. Over 1,450 community members attended the sessions, where they had the opportunity to gather information about the project including by:

- reviewing copies of the draft EIS and draft Airport Plan;
- speaking to a project team member or a representative from another government agency;
- using the noise modelling tool, which was available at staffed computer terminals;
- picking up copies of the draft EIS summary document and factsheets;
- viewing information boards and large-scale displays of maps and charts from the draft EIS and draft Airport Plan; and
- requesting a USB copy of the draft EIS and draft Airport Plan.

The information sessions were promoted through a number of channels, including newspaper and radio advertisements, emails to those subscribed to the project website, information in the Spring 2015 community newsletter, doorknocking households adjacent to the airport site, advice to Councils and letters sent to residents and organisations in the vicinity of the airport site.

The schedule of 16 information sessions was designed to be as accessible as possible to community members. The sessions were held across 12 local government areas on different days of the week at venues of suitable size and with sufficient parking. The first information session was held in Luddenham on 28 October 2015, 10 days after the exhibition period began, and the final session was held at Glenbrook on 9 December 2015, 10 days before the exhibition period closed. Table 8–8 below provides a summary of the session locations, dates and attendees.

Table 8–8 Community information session summary

Location	Local government area	Date	Attendees (approximate)
Holy Family Primary School, Luddenham	Liverpool/Penrith	Wednesday, 28 October 2015 4 pm to 7 pm	131
St Marys Memorial Hall, St Marys	Penrith	Thursday, 29 October 2015 4 pm to 7 pm	25
Blaxland Community Hall, Blaxland	Blue Mountains	Saturday, 31 October 2015 12 pm to 3 pm	235
Prairiewood Community Centre, Prairiewood	Fairfield	Wednesday, 4 November 2015 4 pm to 7 pm	101
Campbelltown Civic Hall, Campbelltown	Campbelltown	Thursday, 5 November 2015 4 pm to 7 pm	63

Location	Local government area	Date	Attendees (approximate)
Bringelly Community Centre, Bringelly	Liverpool	Saturday, 7 November 2015 12 pm to 3 pm	251
Parramatta Town Hall, Parramatta	Parramatta	Wednesday, 11 November 2015 4 pm to 7 pm	50
Warragamba Town Hall, Warragamba	Wollondilly	Saturday, 14 November 2015 12 pm to 3 pm	128
Wentworthville Community Centre, Wentworthville	Holroyd	Wednesday, 18 November 2015 4 pm to 7 pm	33
Melrose Hall, Emu Plains	Penrith	Saturday, 21 November 2015 12 pm to 3 pm	112
St Marys Memorial Hall, St Marys	Penrith	Monday, 23 November 2015 4 pm to 7 pm	23
Hilda M. Davis Senior Citizens Centre, Liverpool	Liverpool	Tuesday, 24 November 2015 4 pm to 7 pm	3
Minchinbury Neighbourhood Centre, Minchinbury	Blacktown	Wednesday, 25 November 2015 4 pm to 7 pm	84
Narellan Child, Family Community Centre, Narellan	Camden	Thursday, 26 November 2015 4 pm to 7 pm	115
Alpha Park Hall, Blacktown	Blacktown	Tuesday, 8 December 2015 4 pm to 7 pm	11
Glenbrook School of Arts Hall, Glenbrook	Blue Mountains	Wednesday, 9 December 2015 4 pm to 7 pm	108

On arriving at the information sessions, attendees were asked to register and provide their residential postcode. They could also provide a contact email address if they elected to receive project updates.

The postcodes provided indicate that residents from across Western Sydney attended the information sessions, with 10 per cent from the postcode 2774 (Blaxland, Blaxland East, Mount Riverview and Warrimoo), 9 per cent from 2773 (Glenbrook and Lapstone) and 9 per cent for 2745 (Glenmore Park, Greendale, Luddenham, Mulgoa, Regentville and Wallacia).

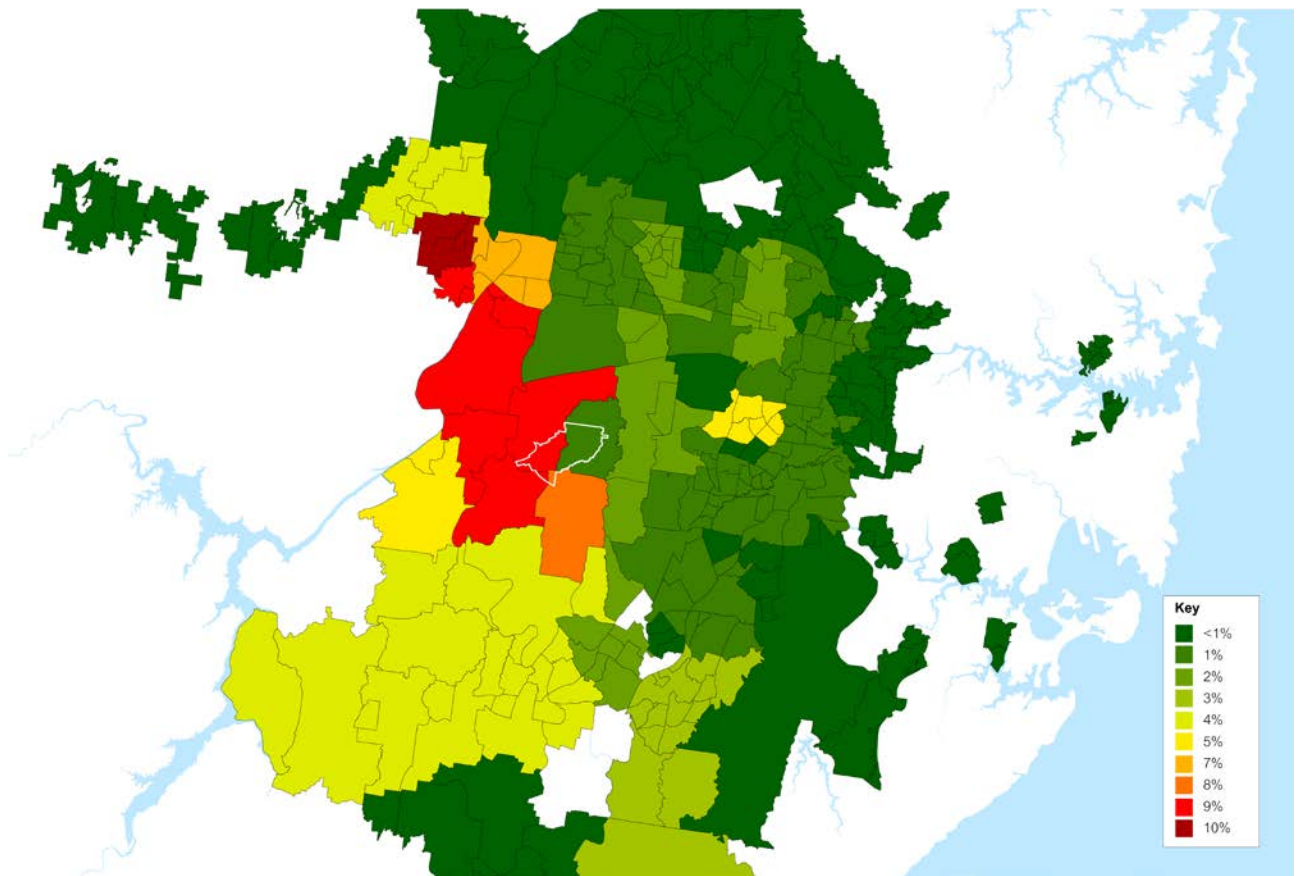


Figure 8–7 Summary of attendees at the community information sessions

8.4.1.8 Survey results at the community information sessions

Attendees at the community information sessions had the opportunity to fill out a survey about how they received information and their level of satisfaction with the information presented at the information session. A total of 393 responses were obtained across all 16 information sessions. The largest number were completed by residents of the Blue Mountains (36 per cent) and Liverpool (15 per cent) local government areas. Respondents indicated that they heard about the sessions through a variety of means, with the largest number referring to information mailed out to residents (34 per cent), word of mouth (18 per cent) and newspaper advertising (13 per cent). The majority of respondents felt neutral or satisfied with the information available at the sessions (65 per cent), while 35 per cent were dissatisfied with the information presented.

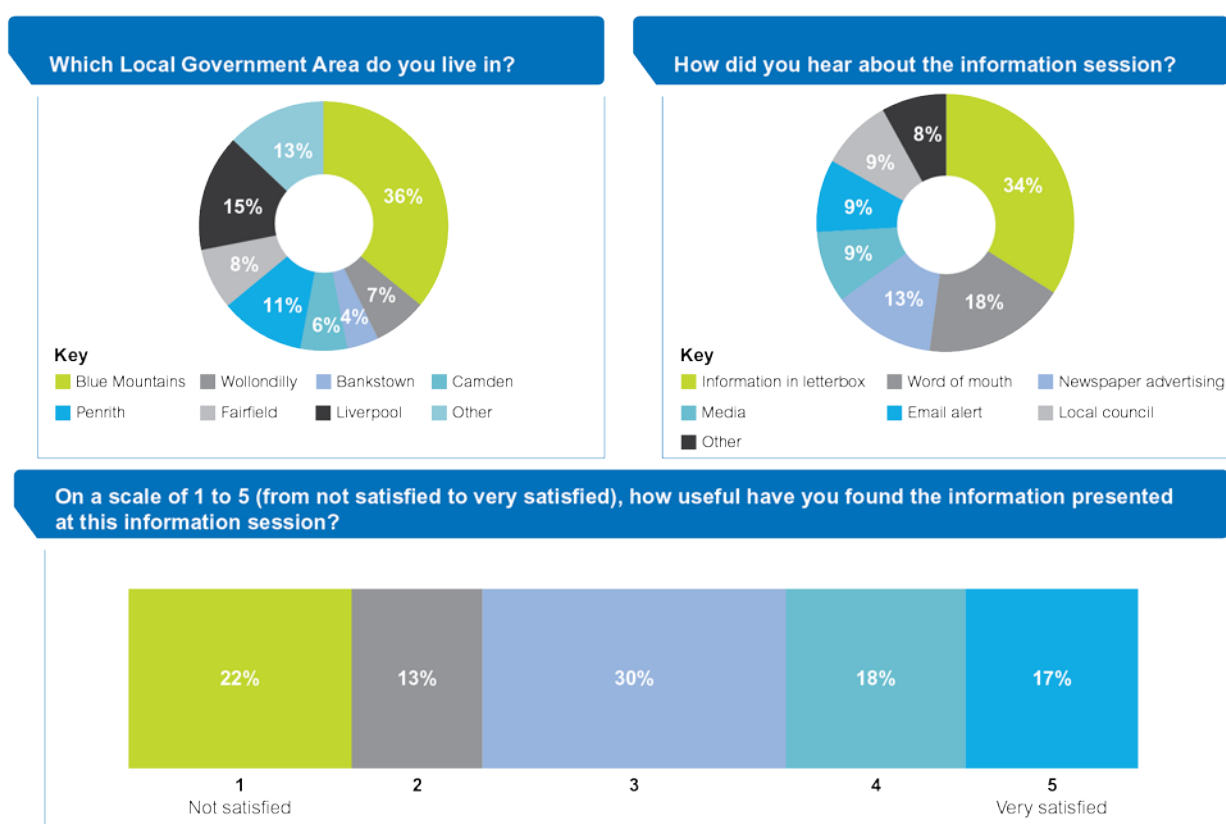


Figure 8-8 Summary of results from the community information sessions

8.4.2 Static displays at local libraries

Printed copies of the draft EIS and draft Airport Plan, as well as supporting resources, were displayed at 19 local libraries across 13 local government areas in Western Sydney and the Blue Mountains, as well as 3 in the Sydney CBD and Canberra. The documents were available to view during normal operating hours throughout the exhibition period. Locations are detailed in Table 8-9 below. All but one local library elected to keep copies of the draft EIS and draft Airport Plan for reference.

Table 8–9 Locations of static displays

LGA	Venue
Bankstown	Bankstown City Library, Bankstown
Blacktown	Max Webber Library, Blacktown
Blue Mountains	Katoomba Library, Katoomba
Blue Mountains	Springwood Library, Springwood
Blue Mountains	Blaxland Library, Blaxland
Camden	Narellan Library, Narellan
Campbelltown	HJ Daley Library, Campbelltown
Fairfield	Fairfield Library, Fairfield
Hawkesbury	Hawkesbury Library Service, Deerubbin Centre, Windsor
The Hills	Castle Hill Library, Castle Hill
Holroyd	Merrylands Central Library, Merrylands
Liverpool	Green Valley Library, Green Valley
Liverpool	Liverpool City Library, Liverpool
Liverpool	Moorebank Library, Moorebank
Parramatta	Parramatta City Library, Parramatta
Penrith	Penrith City Library, Penrith
Penrith	St Marys Library, St Marys
Wollondilly	Camden Library, Wollondilly
Wollondilly	Warragamba Silverdale Neighbourhood Centre, Warragamba
Sydney	City of Sydney Library, Customs House, Circular Quay
Sydney	NSW Department of Planning and Environment
Canberra	Australian Government Department of the Environment

8.4.3 Website content and updates

Throughout the exhibition period the Western Sydney Airport project website <<http://westernsydneyairport.gov.au>> was an accessible, comprehensive and clear source of information on the draft EIS, the draft Airport Plan and all other aspects of the project. All resources were accessible on the website, including:

- full copies of the draft EIS and draft Airport Plan;
- supporting information, including the project summary document and factsheets;
- information on other aspects of the Western Sydney Airport project;
- maps and images;
- locations and details of static displays and community information sessions;

- the noise modelling tool;
- answers to frequently asked questions, updated throughout the exhibition period;
- copies of previous studies, reports and community newsletters, including the two previous EISs and the 2012 Joint Study on aviation capacity in the Sydney region;
- contact information for the project team information line and email; and
- links to further official information, such as the Western Sydney Infrastructure Plan.

The website was updated throughout the exhibition period. This included providing details for upcoming information sessions as well as continually adding to and updating responses to issues raised by community members.

The website was visited by individuals in over 36,000 sessions in the period from 19 October 2015 to 18 December 2015. These sessions included almost 83,000 page views.

Table 8–10 Number of website hits during the exhibition period (19 October to 18 December 2015)

Sessions	Page views
(individual visitors visiting one or more pages/files on the site in one continuous session)	(number of times each webpage was viewed)
36,452	82,964

During the exhibition, a typographical error from an earlier version of the draft EIS was corrected in the standalone digital copies of Chapters 12 and 32 on the website. The typographical error did not alter the overall findings of the draft EIS. When this error was recognised, these chapters were amended to be consistent with the accurate information contained in the printed versions of these chapters, the consolidated digital version of the draft EIS and the versions on USB flash drives. The accurate information in the consolidated version of the draft EIS was available on the website and USBs, and in printed form at static displays, throughout the consultation period.

8.4.4 Noise modelling tool

An aircraft noise modelling tool was launched during the exhibition period. The tool used aircraft noise modelling and indicative flight paths from the draft EIS and presented it on an interactive online map. By entering an address, community members and stakeholders were able to find out information on potential aircraft operations and aircraft noise impacts at specific locations.

The noise modelling tool was made available on the project website, with an accompanying guide for users, and was also presented on staffed terminals at information sessions.



Figure 8-9 Screen shots of the noise modelling tool

There were over 9,000 visits to the noise modelling tool webpage during the exhibition period. Table 8-11 provides a breakdown of statistics of page views on the noise modelling tool and noise modelling tool guide.

Table 8-11 Noise modelling tool website statistics

Page views noise tool	Page views noise tool guide	Total page views
6,668	2,542	9,210

8.4.5 Project summary document

A project summary document was developed to provide an overview of the proposed Western Sydney Airport project, the draft EIS, and the draft Airport Plan in plain English. The 18 page document provided a summary of the need for an airport for Western Sydney, the expected job creation figures, technical information, maps, indicative flight paths and indicative airport layouts, as shown in Figure 8–10 below.



Figure 8–10 Project summary document

Printed copies of the project summary document were available at community information sessions, static displays and via mail. A digital version was also available on the project website for download and review.

8.4.6 Fact sheets

Eleven fact sheets were developed to assist in explaining the information contained in the draft EIS and the draft Airport Plan, in anticipation of community members' questions. Ten fact sheets were released at the beginning of the exhibition. The fact sheets addressed the main aspects of the draft EIS, including topics that the community expressed interest in during Phase 1 consultation. An additional fact sheet, 'Western Sydney Airport and aerial firefighting,' was produced to answer questions about emergency services operations which were raised by some community members during the exhibition period.

All fact sheets were available throughout the exhibition on the project website and at all community information sessions and static displays. The fact sheets available included:

- An Airport for Western Sydney;
- Draft Airport Plan and draft Environmental Impact Statement;
- Air quality;
- Greater Blue Mountains World Heritage Area;
- Biodiversity, water and heritage;

- Indicative flight paths;
- Health risk assessment;
- Managing aircraft noise;
- Social and economic benefits;
- Traffic, transport and access; and
- Western Sydney Airport and aerial firefighting.

An existing fact sheet about Sydney Airport Group's right of first refusal to develop and operate a Western Sydney Airport was also distributed at information sessions and online.

8.4.7 Community newsletter

The Western Sydney Airport community newsletter provides a regular project update to local community members. The spring 2015 community newsletter was provided to coincide with the exhibition of the draft EIS and draft Airport Plan.

The newsletter included information on the content and structure of the draft EIS and draft Airport Plan, upcoming information sessions, and how to make a submission. It also provided contact details for the project team hotline and email. The front of the newsletter is shown in Figure 8–11 below.



Figure 8–11 Spring 2015 Community Newsletter

The newsletter was available at all community information sessions and static display locations, emailed to website subscribers, distributed to local councils and placed on the project website for viewing or download. The newsletter was also sent to approximately 7,500 local residential properties during the period 19 October 2015 to 30 October 2015. The distribution area was the same used for all community newsletters in 2015 and included the following suburbs:

- Badgerys Creek;
- Bringelly;
- Erskine Park.
- Greendale;
- Horsley Park;
- Kemps Creek;
- Luddenham;
- Rossmore; and
- Wallacia.

8.4.8 Stakeholder briefings and meetings during Phase 2

A schedule of over 100 stakeholder briefings and meetings took place throughout the exhibition period. The briefings provided information on the draft EIS and draft Airport Plan and ensured that consistent information was shared across all levels of government and stakeholders. This contributed to the whole-of-government approach to community consultation, providing community members with access to accurate information from different sources.

Stakeholders included government agencies, local councils, representatives from industry and the community, Federal and State MPs and Senators, and other groups. Over 120 stakeholders from government agencies, local councils and other groups also attended a large briefing held at the beginning of the exhibition period on 20 October 2015 in Parramatta.

Table 8–2 provides a full list of stakeholders engaged during all three phases.

8.4.9 Door knocking

On Tuesday 20 October 2015, 75 surrounding properties were door knocked to provide project information and invite residents to the local community information session in Luddenham. The properties shared a boundary with the airport site or were in close proximity.

8.4.10 Letters

Letters were sent out to the surrounding community, local organisations and political representatives at the beginning of the exhibition period. The letters provided information on how to access the draft EIS and draft Airport Plan and the opportunities for gathering more information and speaking to the project team at upcoming information sessions.

Residential properties surrounding the airport site were contacted by letter, which was delivered alongside the doorknocking. Furthermore, letters were sent to over 70 local organisations, including educational facilities, places of worship and other community facilities.

In order to inform appropriate political representatives, 50 Federal and 29 New South Wales Members of Parliament, Senators and Ministers were also contacted by letter. This was consistent with the whole-of-government approach to community consultation, ensuring that community members were able to access consistent and clear information from official sources.

A summary of letters sent is included in Table 8–12 below.

Table 8–12 Summary of letters sent

Community or stakeholder group	Number of letters sent
NSW State MPs and Ministers	29
Federal MPs, Senators and Ministers	50
Sensitive receivers in close proximity to the site (e.g. churches, educational institutions, child care and progress associations)	78
Residents adjacent to site	75

8.4.11 Postcards

A project postcard was used to inform the community of the exhibition of the draft EIS and draft Airport Plan, and the many opportunities to engage with the project. Although the postcard was initially planned to be sent to around 480,000 residential properties, difficulties with timing meant the postcard was sent to over 430,000 residential properties during the exhibition period. In order to reach as many community members as possible, the postcard was made available at static displays and provided to local councils to distribute.



Figure 8–12 Copy of the postcard

8.4.12 Newspaper notifications

In accordance with publishing requirements in the EPBC Regulations, notifications were placed in metropolitan and local newspapers throughout the exhibition period. These notifications raised awareness of the release of the draft EIS and draft Airport Plan and directed readers to the project website for further information, or to call the dedicated hotline number or email. Examples of the advertisements are shown in Figure 8–13 and Figure 8–14 below.

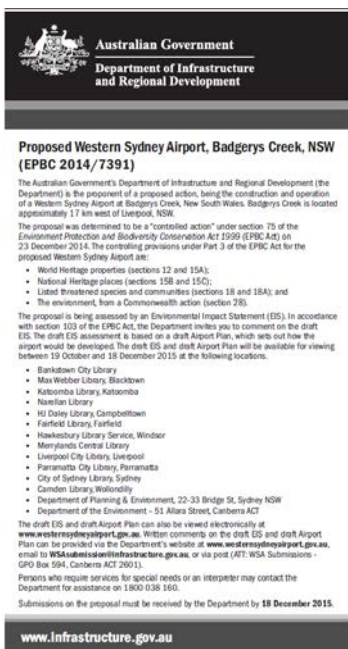


Figure 8–13 Newspaper advertisement giving notice of the draft EIS in accordance with the EPBC Act – the Australian, Daily Telegraph and Sydney Morning Herald (19 October 2015).



Figure 8–14 Newspaper adverts promoting upcoming information sessions - Liverpool City Champion (28/10/2015) and Australian Chinese News Weekly (30/10/2015)

In order to reach as many community members as possible, notifications were placed in a range of national, Sydney metropolitan, local and foreign language newspapers, selected according to analysis of their readership numbers and area of distribution.

Notifications were included in the metropolitan papers The Australian, Daily Telegraph and Sydney Morning Herald on Monday 19 October, the first day of exhibition. Notifications in local newspapers appeared were placed to appear before the dates of local information sessions. Table 8–13 below provides a summary of the newspapers and dates which featured notifications.

Table 8–13 Newspaper notification schedule

Newspaper	Date of publication
English language newspapers	
The Australian	Monday 19 October
Blacktown City Sun	Tuesday 17 November
	Tuesday 24 November
	Tuesday 1 December
	Tuesday 8 December
Blue Mountains Gazette	Wednesday 21 October
	Wednesday 28 October
	Wednesday 2 December
	Wednesday 9 December
Camden Advertiser	Wednesday 18 November
	Wednesday 25 November

Newspaper

Date of publication

Campbelltown/Macarthur Chronicle

Tuesday 27 October

Tuesday 3 November

Daily Telegraph

Monday 19 October

Saturday 24 October

Fairfield City Champion

Wednesday 28 October

Wednesday 4 November

Liverpool City Champion

Wednesday 21 October

Wednesday 28 October

Wednesday 4 November

Wednesday 18 November

Liverpool Leader

Wednesday 21 October

Wednesday 28 October

Wednesday 4 November

Wednesday 18 November

Parramatta Sun

Thursday 5 November

Thursday 12 November

Penrith City Gazette

Thursday 22 October

Thursday 29 October

Thursday 12 November

Thursday 19 November

Penrith Press

Thursday 22 October

Tuesday 27 October

Thursday 12 November

Tuesday 17 November

Thursday 19 November

Sydney Morning Herald

Monday 19 October

Saturday 24 October

Wollondilly Advertiser

Wednesday 4 November

Wednesday 11 November

Foreign language newspapers

An Nahar

Thursday 29 October

Thursday 12 November

Australian Chinese News Weekly

Friday 30 October

Friday 13 November

Bayanihan News

Monday 2 November

Newspaper	Date of publication
Greek Herald	Saturday 31 October
	Saturday 14 November
La Fiamma	Thursday 29 October
	Thursday 12 November
The Indian Link	Friday 6 November
	Friday 20 November
Novosti	Thursday 29 October
	Thursday 12 November
Persian Herald	Thursday 29 October
	Thursday 12 November
Spanish Herald	Friday 30 October
	Friday 13 November
Viet News	Friday 30 October
	Friday 13 November

8.4.13 Emails

Emails were sent throughout the exhibition period to approximately 600 individuals and organisations who had provided email contact details to be kept informed of the project. Email was used to send out reminders of upcoming information sessions, as well as the closing date for submissions. Table 8–14 below provides a summary of the dates, message and number of receipts of each email.

Table 8–14 Email schedule

Date	Content	Number of recipients
26 October 2015	Community information sessions reminder for the Luddenham, St Marys and Blaxland sessions	584
3 November 2015	Community information sessions reminder for the Prairiewood, Campbelltown, and Bringelly sessions	606
10 November 2015	Community information sessions reminder for the Parramatta and Warragamba sessions	607
17 November 2015	Community information sessions reminder for the Wentworthville, Emu Plains, St Marys and Liverpool sessions	599
4 December 2015	Community information sessions reminder for the Blacktown and Glenbrook sessions	601
15 December 2015	Reminder of the submissions period closing soon	603

8.4.14 USB copies of the draft EIS

USB flash drives containing digital copies of the draft EIS and draft Airport Plan were made available to individuals who requested a copy, and were also handed out at stakeholder briefings. This provided an efficient and accessible means of distributing documents containing 14 separate volumes with over 5,000 pages. Over 400 USBs were handed out, including 84 sent to community members and stakeholders who requested a copy.

8.4.15 Translation services

- Arabic;
- Assyrian/Aramaic;
- Dari;
- Greek;
- Hindi;
- Italian;
- Serbian;
- Simplified Chinese;
- Spanish; and
- Vietnamese.



Figure 8-15 Translation symbol

As shown in Figure 8-16 below, the 'An airport for Western Sydney' fact sheet was also translated into the languages listed above and made available at all community information sessions and online.



Figure 8-16 Samples of translated fact sheets

8.4.16 Project team information line and emails

A dedicated 1800 information line (1800 038 160) was available throughout the exhibition period for individuals wishing to speak to the project team. A dedicated email (wsu@infrastructure.gov.au) was also available to community members and stakeholders to connect with the project team about specific queries.

During the exhibition period a total of 162 calls were made to the 1800 information line and 64 emails sent to the project email.

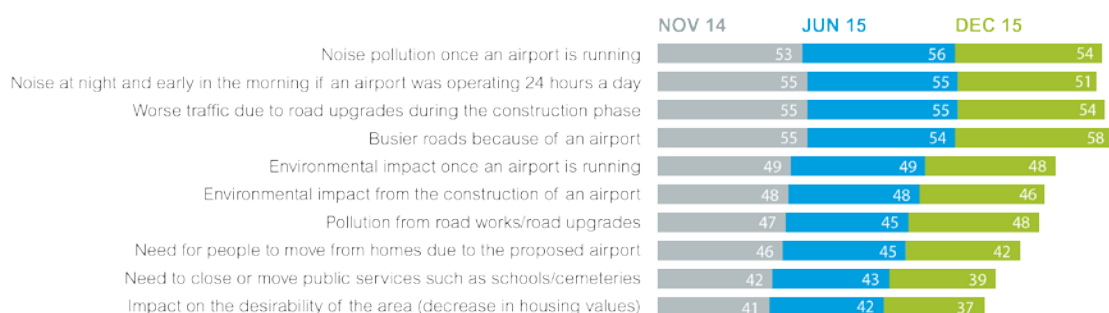
8.4.17 Community research during Phase 2

A third round of research was undertaken in December 2015, two weeks before the end of the exhibition period. The research followed from previous surveys and focus groups to understand attitudes towards the proposed Western Sydney Airport and to ensure communication activities are tailored to meet the needs of the community and stakeholders.

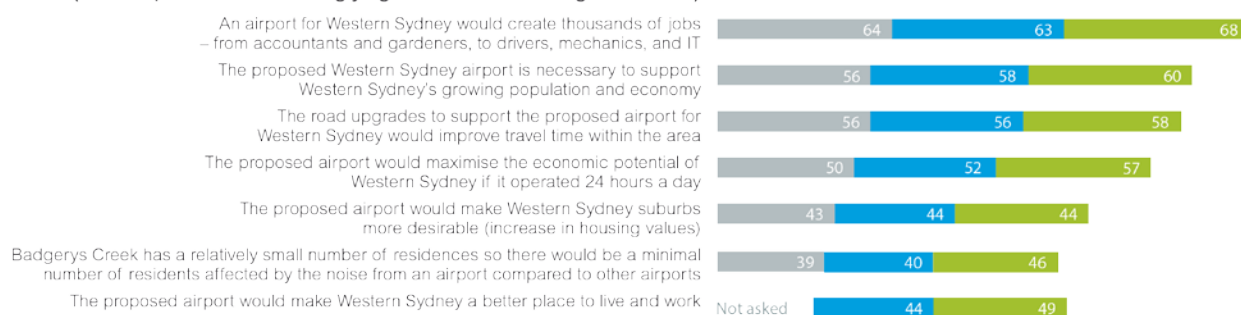
The third round of research involved an online survey of 502 participants, selected representative of age, gender and location in Western Sydney. Outcomes of the surveys showed greater awareness of the project among the community and a slight increase of positive sentiment towards the proposed airport.

Outcomes of the surveys and focus groups were used by the project team to better understand the communication needs of the community and inform future communication and engagement strategies. The findings on attitudes, concerns and demand for information are summarised in Figure 8–17 below.

✈ Concerns (% of respondents that strongly agree with the following issues)



✈ Attitudes towards the proposed airport (% of respondents that strongly agree with the following statements)



✈ Demand for information (% of total respondents)

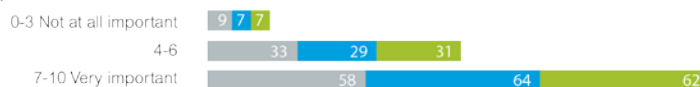


Figure 8–17 Summary of key community research results from November 2014, June 2015 and December 2015

8.5 Phase 3 – finalisation, release and consideration of EIS

Phase 3 began on 19 December 2015 after the end of the public exhibition period for the draft EIS and draft Airport Plan. During Phase 3, activities are being undertaken to keep the community and stakeholders informed about the project as the EIS is finalised alongside a revised draft Airport Plan. Following release of the EIS and determination of the Airport Plan, some of these activities are expected to continue as part of the project's broader community and stakeholder engagement work.

Activities undertaken during Phase 3 were a continuation of activities undertaken in previous phases. These activities have focused on providing information on how submissions and community concerns were reviewed and addressed in the final EIS and revised draft Airport Plan, updating the community and stakeholders on project progress, publication of the EIS and revised draft Airport Plan. Table 8–15 below provides a summary of the activities undertaken to date in.

Having received feedback about the draft EIS and draft Airport Plan during the public exhibition in Phase 2, the focus of work in Phase 3 involved collating, reviewing and addressing all submissions as part of the process to finalise the EIS and the revised draft Airport Plan. For detailed information about the submissions received and how they were addressed in the EIS and revised draft Airport Plan, see Volume 5 – the Submissions Report.

Table 8–15 Summary of stakeholder engagement and community consultation activities during Phase 3

Activity	Description
Briefings and meetings	Discussions have been held with a variety of stakeholders including government agencies, businesses, local councils, industry peak bodies, and tourism and community groups as well as elected officials. This work has been part of the whole-of-government approach, ensuring stakeholders and community members receive consistent information from different sources. Over 40 meetings were held with individuals or groups from January to August 2016. Briefings are expected to continue after the release of the final EIS and Airport Plan.
Community events	A total of nine community pop-up displays at local events have been held between January and August 2016. 2016 community members approached the stalls for information. Pop-up displays are expected to continue at local events following the release of the final EIS and Airport Plan.
Information sessions	The project team has attended a total of four information sessions hosted by other government agencies for associated infrastructure projects between January and August 2016. The purpose of attendance at these information sessions has been to provide information on the proposed airport. 295 community members attended the information sessions.
Surveys	Online surveying was used to gauge interest and existing understanding of the proposed Western Sydney Airport. Online surveys were completed in December 2015 and April 2016. A total of 1001 community members from Western Sydney and greater Sydney have completed online surveys during Phase 3.
Community newsletters	Two community newsletters have been released during Phase 3, including Autumn 2016 released in April 2016 and Winter 2016 released in August 2016. Following feedback from the community during the consultation period, the area of distribution for the community newsletter was expanded. Each edition of the newsletter was distributed to around 10,000 households in the Western Sydney area, made available on the project website, distributed to local councils and emailed to subscribers.

Activity

Description

Fact sheets	<p>A number of fact sheets were available at all community events as well as online. Fact sheets available during Phase 3 included:</p> <ul style="list-style-type: none">• Air quality;• Biodiversity, water and heritage;• The draft Airport Plan and draft Environmental Impact Statement;• Greater Blue Mountains Heritage Area;• Health risk assessment;• Indicative flight paths;• Managing aircraft noise;• Western Sydney Airport and aerial firefighting;• An airport for Western Sydney;• Social and economic benefits;• Traffic Transport and access;• Budget 2016: Western Sydney Airport;• Employment hub for Western Sydney;• The right of first refusal;• Badgerys Creek cemeteries; and• Badgerys Creek: minor road closures.
Website content and updates (www.westernsydneyairport.gov.au)	<p>The project website continued to be updated in order to provide a comprehensive and authoritative source of information for the community and stakeholders. The website will continue to be maintained and updated following the release of the final EIS.</p> <p>Over 65,000 visits to the website between 19 December 2015 and 17 August 2016, including over 140,000 page views.</p>
Noise modelling tool	<p>The noise modelling tool was still available online during Phase 3 and will be available after the release of the final EIS. The noise tool and guide have been viewed almost 6,000 times between 1 December 2015 and 17 August 2016</p>
Emails	<p>Throughout Phase 3, two informative emails were sent to almost 800 individuals and organisations who provided an email address to be kept informed of the project. Updates will continue to be sent via email after the release of the final EIS.</p>
Information line and email to project team	<p>An information line and email for individuals wishing to speak to the project team continued to be available during Phase 3. This will continue to be monitored after the release of the final EIS. Approximately 160 phone calls and over 170 emails were received between 19 December 2015 and August 2016.</p>
Media releases	<p>Media releases were issued throughout Phase 3 in order to keep the community and stakeholders informed. Five media releases about the project were issued between 19 December 2015 and August 2016.</p>
Notification for the release of the final EIS	<p>Consistent with publication requirements of the EPBC Act and Regulations, notifications will be placed in one national, two Sydney metropolitan, 11 local newspapers and 10 foreign language newspapers. Each notification will provide details of the publication of the final EIS and revised draft Airport Plan.</p>



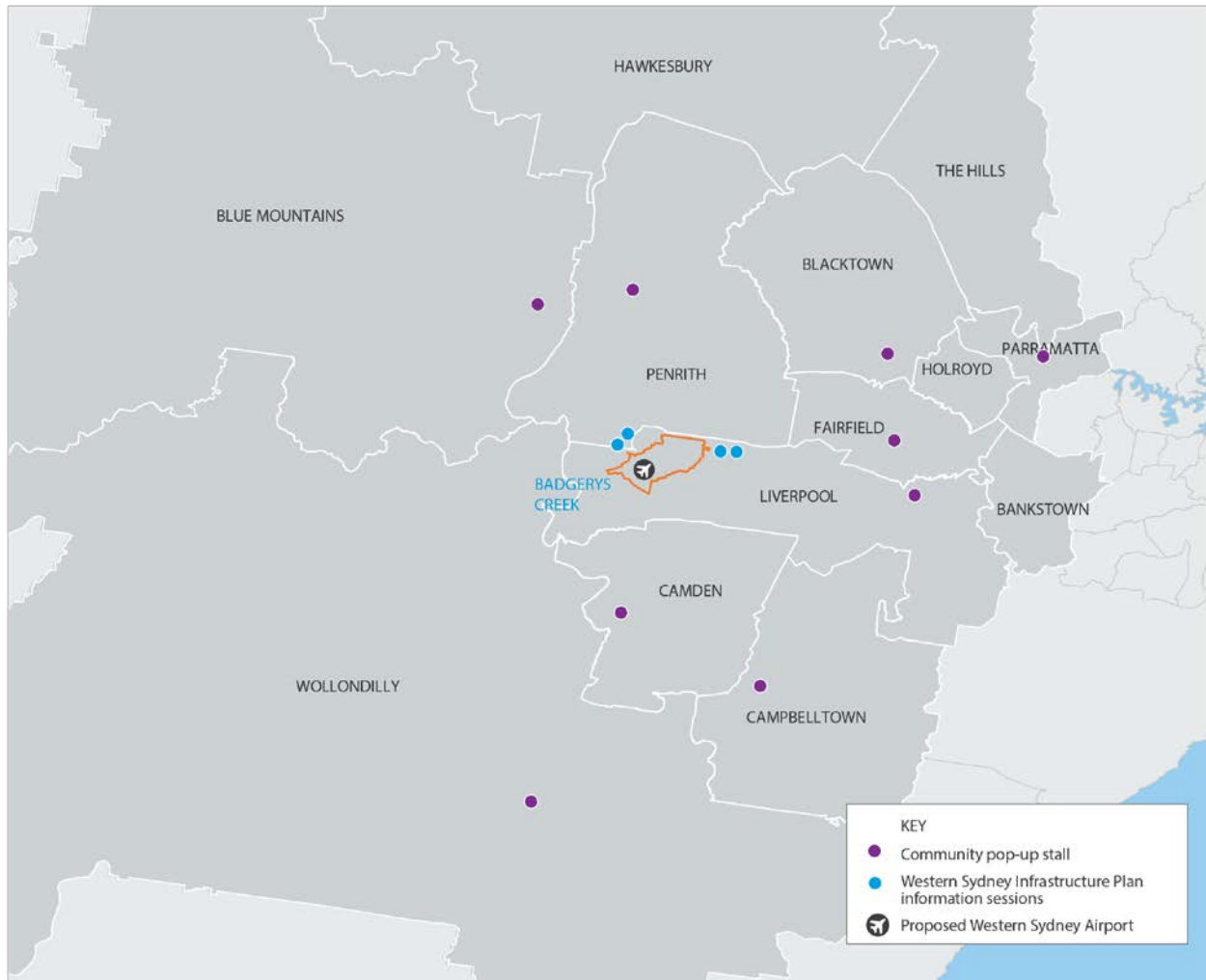
8.5.1 Stakeholder engagement during Phase 3

Stakeholder engagement has been an ongoing focus of the project. The rolling schedule of meetings and briefings, letters, and phone and email communication continued in Phase 3, including after the release of the EIS.

Table 8–2 provides a full list of stakeholders consulted during all three phases.

8.5.2 Community consultation during Phase 3

Community consultation activities continued during Phase 3, including after the release of the EIS. Figure 8–18 summarises the community pop-up displays and information sessions undertaken between February – May 2016.



Month	LGA	Event type	Location
FEBRUARY 2016	Liverpool	Western Sydney Infrastructure Plan information sessions	Holy Family Primary School
	Liverpool/Penrith	Western Sydney Infrastructure Plan information sessions	Kemps Creek Public School
	Camden	Community pop-up stall	Cobbity Village Markets
	Campbelltown	Community pop-up stall	Macarthur Markets
MARCH 2016	Liverpool/Penrith	Western Sydney Infrastructure Plan information sessions	Kemps Creek Public School
	Liverpool	Western Sydney Infrastructure Plan information sessions	Holy Family Primary School
	Blacktown	Western Sydney Infrastructure Plan information sessions	Blacktown Markets
	Liverpool	Western Sydney Infrastructure Plan information sessions	Liverpool Night Markets
	Penrith	Western Sydney Infrastructure Plan information sessions	Penrith CBD Festival
APRIL 2016	Fairfield	Community pop-up stall	Fairfield City Markets
	Blue Mountains	Community pop-up stall	Glenbrook Markets
	Parramatta	Western Sydney Infrastructure Plan information sessions	Western Sydney University Parramatta Campus
MAY 2016	Wollondilly	Western Sydney Infrastructure Plan information sessions	Wollondilly illuminARTE Festival

Figure 8–18 Summary of community consultation activities between February and May 2016

Community pop-up stalls

A total of nine community pop-ups stalls at local events were carried out between February and May 2016. The stalls provided information about the project to the Western Sydney community and an opportunity to engage with the project team. Resources available at these stalls included newsletters, fact sheets and maps.

The stalls were held at locations throughout Western Sydney and the Blue Mountains, including nine local government areas. Approximately 1,606 community members approached the stalls for information. Table 8–16 below provides details of the number of community members who approached the stalls.

Table 8–16 Summary of visits to community pop-up stalls

Location	Local government area	Date	Attendees (approximate)
Macarthur Markets, Macarthur	Campbelltown	28 February 2016	80
Liverpool Night Markets, Liverpool	Liverpool	5 March 2016	107
Blacktown Markets, Blacktown	Blacktown	6 March 2016	245
Penrith CBD Festival, Penrith	Penrith	19 March 2016	200
Cobbitty Village Markets, Cobbitty	Camden	2 April 2016	150
Fairfield Markets, Fairfield	Fairfield	9 April 2016	103
Glenbrook Rotary Craft Market, Glenbrook	Blue Mountains	16 April 2016	146
University of Western Sydney, Parramatta Campus	Parramatta	28 April 2016	67
Wollondilly illuminARTE Festival	Wollondilly	7 May 2016	508

Joint information sessions, February-March 2016

In February and March 2016, NSW Roads and Maritime Services held 4 consultation sessions on proposed routes for the M12 and The Northern Road realignment under the Western Sydney Infrastructure Plan (WSIP). As these projects are based around the airport site, representatives from the EIS and Airport Plan project teams attended the sessions in order to provide information and answer any questions about the Western Sydney Airport project. This contributed to the whole-of-government approach used for community consultation, ensuring community members had access to consistent and clear information.

In total, approximately 295 community members made enquiries about the Western Sydney Airport project at these information sessions. Table 8–17 below summarises the WSIP information sessions.

Table 8–17 Summary of visits to WSIP information sessions

Location	Local government area	Date	Attendees (approximate)
Holy Family Primary School, Luddenham	Liverpool/Penrith	24 February 2016	115
Kemps Creek Public School, Kemps Creek	Liverpool/Penrith	27 February 2016	80
Kemps Creek Public School, Kemps Creek	Liverpool/Penrith	2 March 2016	50
Holy Family Primary School, Luddenham	Liverpool/Penrith	5 March 2016	50

8.5.3 Community research during Phase 3

A fourth round of research was undertaken in April 2016. The research followed from previous surveys and focus groups to understand attitudes towards the proposed Western Sydney Airport and to ensure communication activities are tailored to meet the needs of the community and stakeholders.

The fourth round of research involved an online survey of 499 participants. Respondents were representative of age, gender and location in Western Sydney. Outcomes of the surveys and focus groups were used by the project team to better understand the communication needs of the community following the public exhibition of the draft EIS and draft Airport Plan in late 2015 and other announcements on the proposed Western Sydney Airport and associated infrastructure. The results were also used to inform future communication and engagement strategies. The findings on attitudes, concerns and demand for information are summarised in Figure 8–19 below.

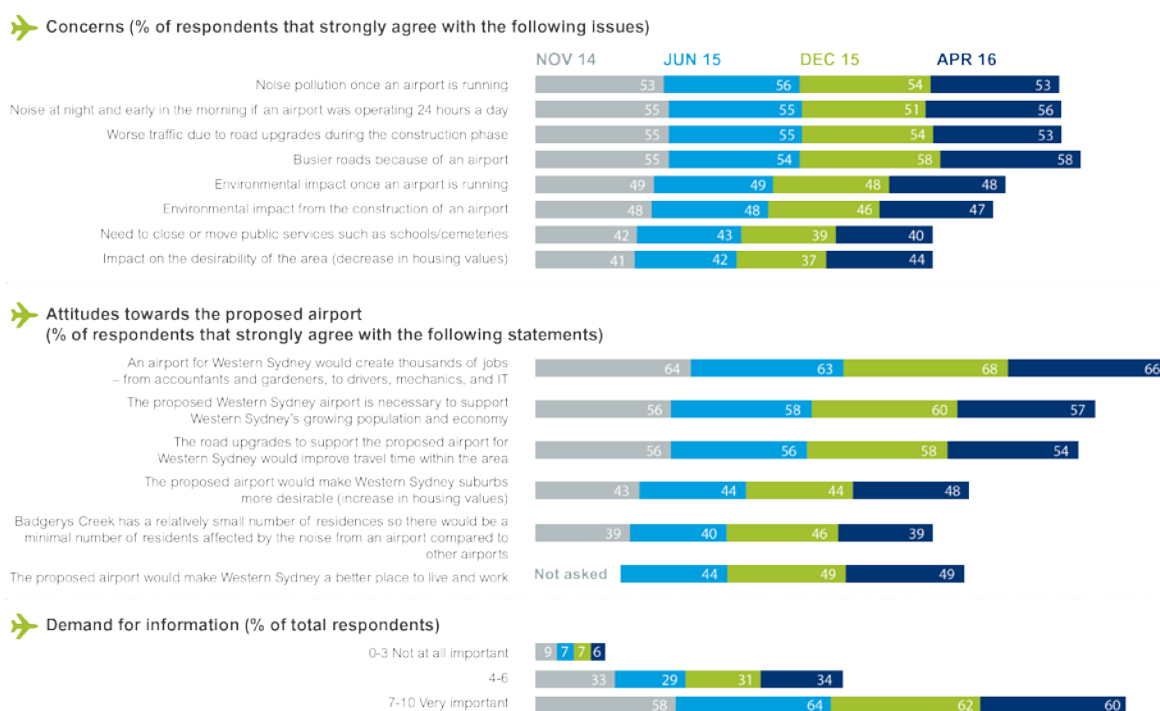


Figure 8–19 Summary of key community research results from November 2014, June 2015, December 2015 and April 2016



This page left intentionally blank