



# WESTERN SYDNEY Fact Sheet



## European heritage and Western Sydney International airport

The site of Western Sydney International (Nancy-Bird Walton) Airport has European heritage values.

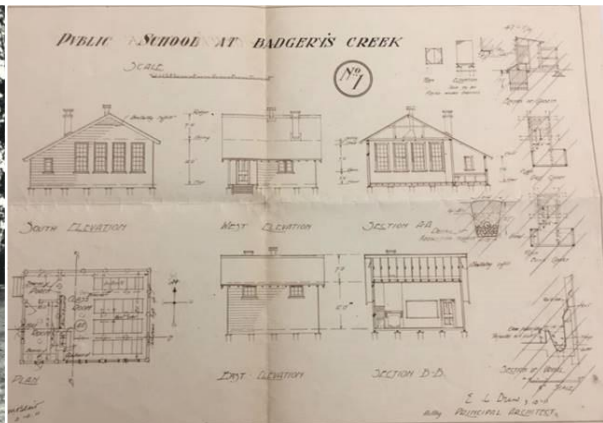
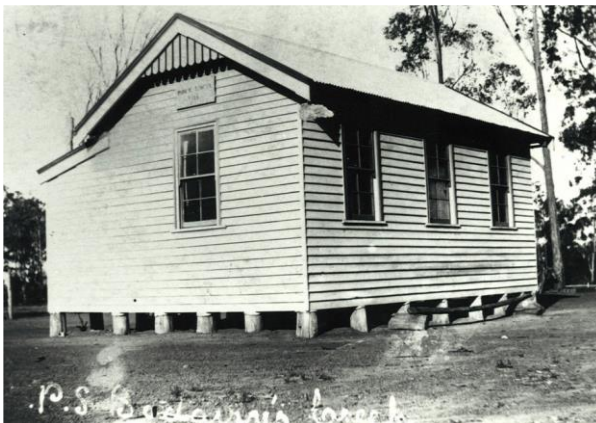
The *Western Sydney Airport Environmental Impact Statement 2016* (EIS) considered the impacts of the airport on the European heritage of the site and surrounding areas. The assessment for the EIS was based on specialist European heritage studies and site investigations in accordance with relevant legislation.

The *Western Sydney Airport Plan 2016* (Airport Plan) authorises the construction and operation of the Stage 1 development (one runway and up to 10 million passengers a year) and sets out requirements for the management of European heritage values across the airport site.

### European heritage at the airport site

Twenty European heritage items were recorded on the airport site and an additional 22 heritage items in the surrounding area. An archival recording process was undertaken for European heritage items identified on the airport site. Following documentation, European heritage items were removed from the airport site.

European heritage items included a winery, farm cottages and a school. This reflects the historical context of European settlement at the site, including early attempts to develop local agricultural and pastoral economies and the emergence of settled village communities.



Identified heritage items reflect the cultural context of the airport site. They provide insight into the history of the region and represent the importance and value of the land to people and communities.

## Managing cultural heritage during construction

The Airport Plan requires that Western Sydney Airport, the company responsible for building and operating the airport, develop Construction Environmental Management Plans (CEMPs). The European and Other Heritage CEMP outlines in detail how impacts on European heritage are being managed and mitigated during the first phase of construction, including how Western Sydney Airport is meeting the conditions in the Airport Plan.

Mitigation and management measures to recognise and preserve the European heritage of the site include:

- archaeological investigations
- archival recording, including photographic records
- relocation of remains located in known grave sites
- the recording of staged demolition of structures.

